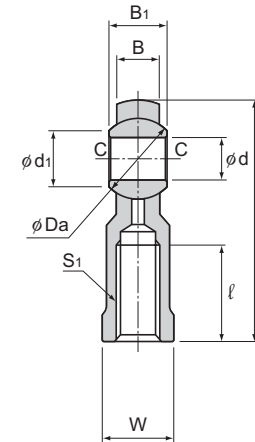
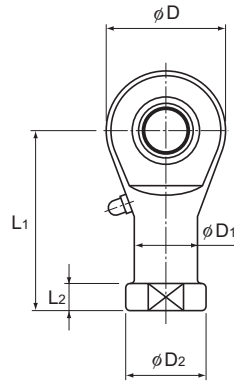


# Model RBH (Die Cast, Low Price Type)



Unit: mm

Model No.	Outer dimensions			Threaded S <sub>1</sub> JIS Class 2	Holder Dimensions							Grease nipple	Spherical inner ring dimensions				Permissible tilt angles			Static applied load Radial C <sub>S</sub> N	Mass g
	Length L	Diameter D	Width B <sub>1</sub> 0 -0.1		W 0 -0.3	D <sub>1</sub>	D <sub>2</sub>	B	L <sub>1</sub>	L <sub>2</sub>	ℓ		d H7	Ball diameter Da mm (inch)	d <sub>1</sub>	C	α <sub>1</sub> °	α <sub>2</sub> °	α <sub>3</sub> °		
RBH 5	35.5	17	8	M5×0.8	9	9	11	6	27	4	16	PB107	5	11.112(7/16)	7.7	0.3	8	13	30	5490	16
RBH 6	39.7	19.5	9	M6×1	11	10	13	6.75	30	5	16		6	12.7(1/2)	9	0.3	8	13	30	6760	21
RBH 8	48	24	12	M8×1.25	14	12.5	16	9	36	5	19		8	15.875(5/8)	10.4	0.5	8	14	25	9610	43
RBH 10	57	28	14	M10×1.5	17	15	19	10.5	43	6.5	23		10	19.05(3/4)	12.9	0.5	8	14	25	13000	68
RBH 12	66	32	16	M12×1.75	19	17.5	22	12	50	6.5	27		12	22.225(7/8)	15.4	0.5	8	13	25	16400	100
RBH 14	75	36	19	M14×2	22	20	25	13.5	57	8	30		14	25.4(1)	16.9	0.7	10	16	24	20200	142
RBH 16	84	40	21	M16×2	22	22	27	15	64	8	36		16	28.575(1 1/8)	19.4	0.7	9	15	24	24600	185
RBH 18	93.5	45	23	M18×1.5	27	25	31	16.5	71	10	40		18	31.75(1 1/4)	21.9	0.7	9	15	24	28800	265
RBH 20	101.5	49	25	M20×1.5	30	27.5	34	18	77	10	43		20	34.925(1 3/8)	24.4	0.7	9	15	24	33600	334
RBH 22	111	54	28	M22×1.5	32	30	37	20	84	12	47		22	38.1(1 1/2)	25.8	0.7	10	15	23	40400	454

### [Material]

Holder : High strength zinc alloy (see A-942)  
Spherical inner ring : SUJ2, 58 HRC or higher

( Hard chrome plated except for the inner surface of the inner ring )

### [Fitting with the Shaft]

Condition	Dimensional tolerance of the shaft
Normal load	h7
Indeterminate load	p6

### [Clearance]

Unit: mm

Radial clearance	0.03 or less
Axial clearance	0.1 or less

### [Lubrication]

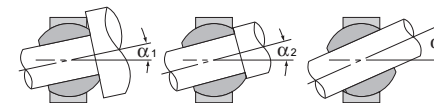
Apply lubricant before using the product. The holder has a greasing hole and an oil groove; they allow grease to be replenished through the grease nipple as necessary.

### [Identification of Left-hand Thread]

If the female threading is left-hand, symbol "L" is added. The actual product is marked with symbol "L" on the holder.

### Model number coding

**RBH10 L**  
Model number | Left-hand thread



Permissible Tilt Angles