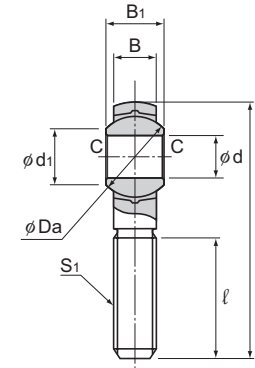
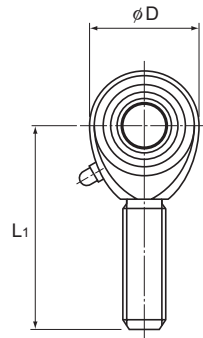


Model POS (Male Thread Type)



Unit: mm

Model No.	Outer dimensions			Threaded S_1 JIS Class 2	Holder Dimensions			Grease nipple	Spherical inner ring dimensions				Permissible tilt angles			Static applied load Radial C_s N	Mass g	
	Length L	Diameter D	Width B_1 0 -0.1		B ± 0.1	L_1	ℓ		d H7	Ball diameter Da mm (inch)	d_1	C	α_1°	α_2°	α_3°			
POS 5	41	16	8	M5×0.8	6	33	20	PB107	5	11.112(⁷ / ₁₆)	7.7	0.3	8	13	30	3430	12.5	
POS 6	45	18	9	M6×1	6.75	36	22		6	12.7(¹ / ₂)	9	0.3	8	13	30	4900	19	
POS 8	53	22	12	M8×1.25	9	42	25		8	15.875(⁵ / ₈)	10.4	0.5	8	14	25	6860	32	
POS 10	61	26	14	M10×1.5	10.5	48	29		10	19.05(³ / ₄)	12.9	0.5	8	14	25	10800	54	
POS 12	69	30	16	M12×1.75	12	54	33		12	22.225(⁷ / ₈)	15.4	0.5	8	13	25	16700	85	
POS 14	77	34	19	M14×2	13.5	60	36		14	25.4(1)	16.9	0.7	10	16	24	20600	126	
POS 16	85	38	21	M16×2	15	66	40		16	28.575(¹ / ₈)	19.4	0.7	9	15	24	25000	185	
POS 18	93	42	23	M18×1.5	16.5	72	44		18	31.75(¹ / ₄)	21.9	0.7	9	15	24	29400	260	
POS 20	101	46	25	M20×1.5	18	78	47		20	34.925(¹ / ₈)	24.4	0.7	9	15	24	34300	340	
POS 22	109	50	28	M22×1.5	20	84	51		22	38.1(¹ / ₂)	25.8	0.7	10	15	23	41200	435	
POS 25	124	60	31	M24×2	22	94	57		25	42.862(¹ / ₁₆)	29.6	0.8	9	15	23	72500	650	
POS 30	145	70	37	M30×2	25	110	66		A-M6F	30	50.8(2)	34.8	0.8	10	17	23	92200	1070

[Material]

Holder : S35C (Chromate treatment)
Spherical inner ring : SUJ2, 58 HRC or higher

(Hard chrome plated except for the inner surface of the inner ring)

Bush : Special copper alloy

[Fitting with the Shaft]

Condition	Dimensional tolerance of the shaft
Normal load	h7
Indeterminate load	p6

[Clearance]

Unit: mm

Radial clearance	0.035 or less
Axial clearance	0.1 or less

[Lubrication]

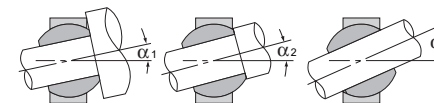
Apply lubricant before using the product. The holder has a greasing hole and an oil groove; they allow grease to be replenished through the grease nipple as necessary. To lubricate the product, replenish grease from the holder greasing hole for models POS5 and 6, or from the grease nipple for other models.

[Identification of Left-hand Thread]

If the male thread is left-hand, symbol "L" is added.
The actual product is marked with symbol "L" on the holder.

Model number coding

POS10 L
Model number | Left-hand thread



Permissible Tilt Angles