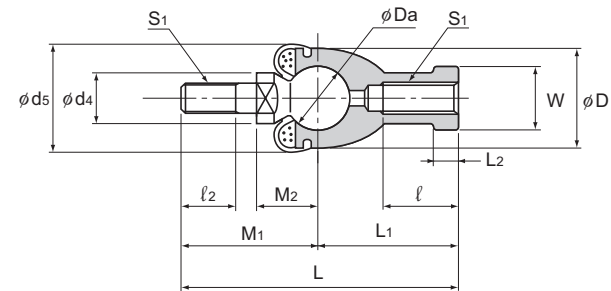
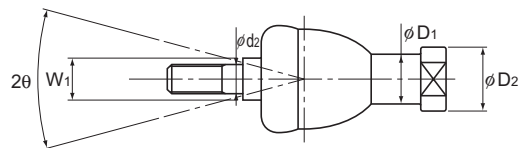


Model RBI



Unit: mm

Model No.	Outer dimensions		Threaded S ₁ JIS Class 2	Holder dimensions						Shaft diameter d ₂ h9	Ball shank dimensions					Boot d ₅	Ball diameter D _a	Permissible tilt angles 2θ°	Applied static load		Yield-point strength P _k N	Mass g
	Length L	Diameter D		L ₁	L ₂	ℓ	D ₁	D ₂	W ₀ -0.3		M ₁	M ₂ ±0.3	ℓ ₁	W ₁ 0 -0.3	d ₄				Tensile C _s N	Compressive C _s N		
RBI 5D	46	17	M5×0.8	24	4	12	9	11	9	5	22	11	8	7	9	20	11.112	25	5690	11400	2840	25
RBI 6D	55.2	20	M6×1	28	5	15	10	13	11	6	27.2	12.2	11	8	10	20	12.7	25	7450	14900	3730	40
RBI 8D	65	24	M8×1.25	32	5	16	12.5	16	14	8	33	16	12	10	12	24	15.875	25	11700	23200	5880	75
RBI 10D	74.5	28	M10×1.25	35	6.5	18	15	19	17	10	39.5	19.5	15	11	14	30	19.05	25	16800	33500	8430	120
RBI 10BD	80.5	28	M10×1.5	35	6.5	18	15	19	17	10	45.5	19.5	21	11	14	30	19.05	25	16800	33500	8430	123
RBI 12D	84	32	M12×1.25	40	6.5	20	17.5	22	19	12	44	21	17	17	19	32	22.225	25	22800	45600	11400	185
RBI 12BD	91	32	M12×1.75	40	6.5	20	17.5	22	19	12	51	21	24	17	19	32	22.225	25	22800	45600	11400	190
RBI 14D	103	36	M14×1.5	45	8	25	20	25	22	14	58	23.5	22	17	19	38	25.4	17	29800	59600	14900	275
RBI 14BD	109	36	M14×2	45	8	25	20	25	22	14	64	23.5	28	17	19	38	25.4	17	29800	59600	14900	280
RBI 16D	112	40	M16×1.5	50	8	27	22	27	22	16	62	25.5	23	19	22	44	25.4	17	29800	59600	14900	360
RBI 16BD	118	40	M16×2	50	8	27	22	27	22	16	68	25.5	29	19	22	44	25.4	17	29800	59600	14900	370
RBI 18D	130.5	45	M18×1.5	58	10	32	25	31	27	18	72.5	31	25	20	23	45	28.575	17	37700	75400	18900	535
RBI 20D	133	45	M20×1.5	63	10	38	27.5	34	30	20	70	29	25	24	29	50	28.575	10	37700	75400	18900	570
RBI 22D	145	50	M22×1.5	70	12	43	30	37	32	22	75	33	26	24	27	52	31.75	10	46600	93100	23500	755

[Material]

Holder : High strength zinc alloy (see A-926)
 Ball shank : Bearing steel ball Hardness: 650 Hv or higher
 Shank S35C
 Chromate treatment
 Boot : NBR special synthetic rubber

[Spherical Clearance]

Perpendicular to the axis: 0.03mm or less
 Axial direction : 0.1mm or less

[Tolerance of the Mating Hole of the Ball Shank]

H10 is recommended.

Note) The permissible tilting angle of types without boot are greater by approximately 5°.

[Yield-Point Strength]

It indicates the strength in the direction shown in the figure below.

[Lubrication]

Lithium soap group grease No. 2 is contained in the boot.

[Identification of Left-hand Thread]

If the female threading is left-hand, symbol "L" is added. The actual product is marked with symbol "L" on the holder.

Model number coding

RBI10 D L
 Model number | With boot attached | Left-hand thread

