

SNR/SNS

Caged Ball LM Guides

B Product Specifications

Dimensional Drawing, Dimensional Table

Models SNR-R and SNR-LR	B-26
Models SNS-R and SNS-LR	B-28
Models SNR-C and SNR-LC	B-30
Models SNS-C and SNS-LC	B-32
Models SNR-RH (Build to Order) and SNR-LRH (Build to Order)	B-34
Models SNS-RH (Build to Order) and SNS-LRH (Build to Order)	B-36
Models SNR-CH (Build to Order) and SNR-LCH (Build to Order)	B-38
Models SNS-CH (Build to Order) and SNS-LCH (Build to Order)	B-40

Standard Length and Maximum Length of the LM Rail	B-42
--	------

Options	B-223
The LM Block Dimension (Dimension L) with LaCS and Seals Attached	B-224
Incremental dimension with grease nipple (when LaCS is attached)	B-231
Dedicated Bellows JSN for Models SNR and SNS	B-237
Cap C	B-250
LM Block Dimension (Dimension L) with QZ Attached	B-251

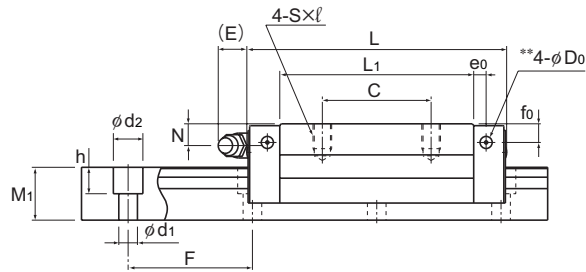
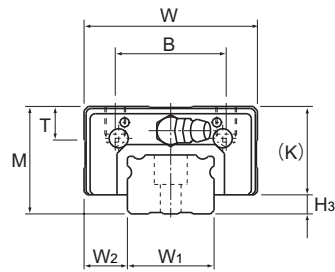
A Technical Descriptions of the Products (Separate)

Technical Descriptions

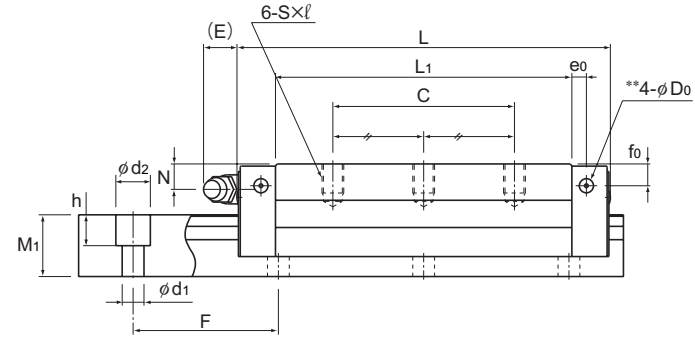
Structure and features	A-149
Types and Features	A-150
Rated Loads in All Directions	A-153
Equivalent Load	A-153
Service Life	A-100
Radial Clearance Standard	A-113
Accuracy Standards	A-119
Shoulder Height of the Mounting Base and the Corner Radius	A-327
Error Allowance in the Parallelism between Two Rails	A-333/A-334
Error Allowance in Vertical Level between Two Rails	A-336/A-337

* Please see the separate "A Technical Descriptions of the Products".

Models SNR-R and SNR-LR



Model SNR-R

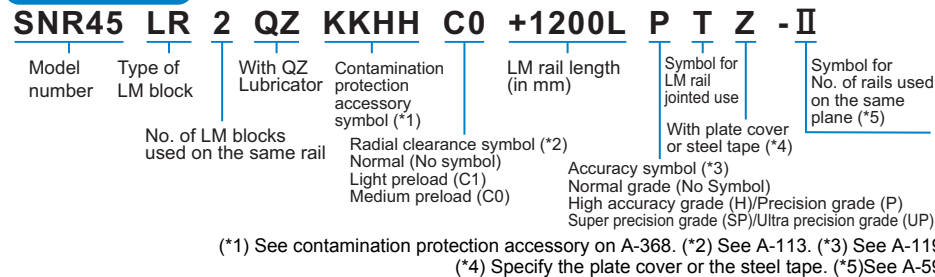


Model SNR-LR

Unit: mm

Model No.	Outer dimensions			LM block dimensions													H ₃	LM rail dimensions					Basic load rating		Static permissible moment kN-m*					Mass	
	Height	Width	Length	B	C	S×ℓ	L ₁	T	K	N	f ₀	E	e ₀	D ₀	Grease nipple	Width		Height	Pitch	Length*	C	C ₀	M _a		M _b		M _c	LM block	LM rail		
	M	W	L																				W ₀	W ₂	M ₁	F	d ₁ ×d ₂ ×h			Max	kN
SNR 25R SNR 25LR	31	50	83.6 102.8	32	35 50	M6×8	62.4 81.6	9.7	25.5	7	6	12	4	3.9	B-M6F	5.5	25	12.5	17	40	6×9.5×8.5	2500	48 57	79 101	0.682 1.14	3.62 5.55	0.427 0.708	2.25 3.4	0.868 1.1	0.4 0.6	3.1
SNR 30R SNR 30LR	38	60	98 120.5	40	40 60	M8×10	72.1 94.6	9.7	31	7	7	12	6.5	3.9	B-M6F	7	28	16	21	80	7×11×9	3000	68 81	106 138	1.04 1.81	5.7 8.89	0.653 1.12	3.56 5.47	1.3 1.69	0.7 0.9	4.4
SNR 35R SNR 35LR	44	70	110.3 135.8	50	50 72	M8×12	79 104.5	11.7	35	8	8	12	6	5.2	B-M6F	9	34	18	24.5	80	9×14×12	3000	90 108	144 188	1.61 2.68	8.64 13.6	1.01 1.67	5.39 8.49	2.13 2.79	1 1.4	6.2
SNR 45R SNR 45LR	52	86	139 171.8	60	60 80	M10×17	105 137.8	14.7	40.4	10	8	16	8.5	5.2	B-PT1/8	11.5	45	20.5	29	105	14×20×17	3090	132 161	216 288	3.29 5.4	16 26.2	2.03 3.35	9.86 16.2	4.21 5.64	1.9 2.4	9.8
SNR 55R SNR 55LR	63	100	163.3 200.5	65	75 95	M12×18	123.6 160.8	17.7	49	11	10	16	10	5.2	B-PT1/8	14	53	23.5	36.5	120	16×23×20	3060	177 214	292 383	4.99 8.41	25.7 40.9	3.11 5.22	16 25.3	6.69 8.78	3.1 4	14.5
SNR 65R SNR 65LR	75	126	186.4 246.4	76	70 110	M16×20	143.6 203.6	21.6	60	16	15	16	9	8.2	B-PT1/8	15	63	31.5	43	150	18×26×22	3000	260 340	409 572	8.05 15.9	41.2 74.5	5.03 9.84	25.6 45.7	11 15.4	5.6 8	20.5
SNR 85LR	90	156	302.8	100	140	M18×25	251	27.3	73	20	20	16	10	8.2	B-PT1/8	17	85	35.5	48	180	24×35×28	3000	550	887	30.3	142	18.7	87.6	31.9	14.8	29.5

Model number coding

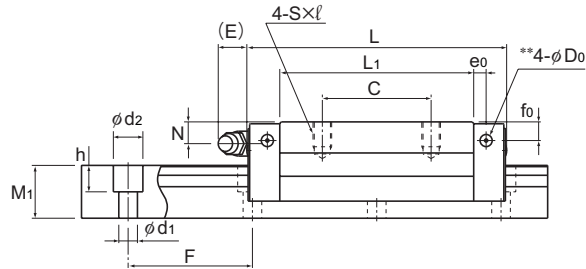
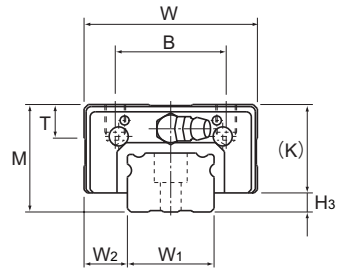


(*1) See contamination protection accessory on A-368. (*2) See A-113. (*3) See A-119. (*4) Specify the plate cover or the steel tape. (*5) See A-59.

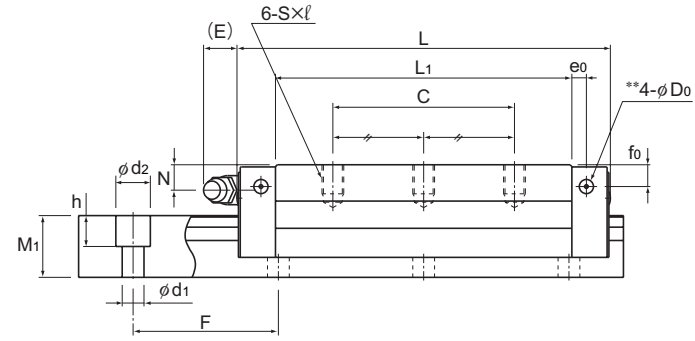
Note) Pilot holes for side nipples** are not drilled through in order to prevent foreign material from entering the product. THK will mount grease nipples for your request. Therefore, do not use the side nipple pilot holes** for purposes other than mounting a grease nipple.
The maximum length under "Length*" indicates the standard maximum length of an LM rail. (See B-42.)
Static permissible moment*: 1 block: static permissible moment value with 1 LM block
Double blocks: static permissible moment value with 2 blocks closely contacting with each other

Note) This model number indicates that a single-rail unit constitutes one set. (i.e., required number of sets when 2 rails are used in parallel is 2 at a minimum.)
Those models equipped with QZ Lubricator cannot have a grease nipple.

Models SNS-R and SNS-LR



Model SNS-R

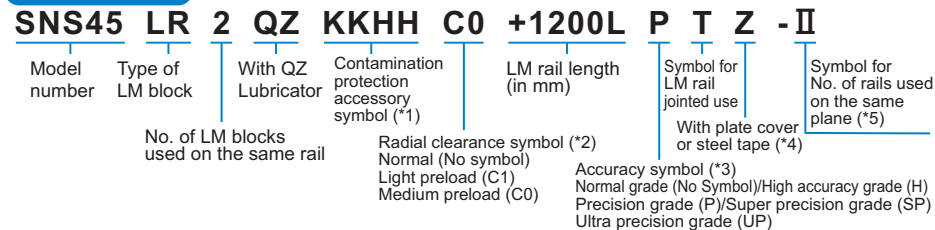


Model SNS-LR

Unit: mm

Model No.	Outer dimensions			LM block dimensions											H ₃	LM rail dimensions					Basic load rating		Static permissible moment kN-m*					Mass			
	Height	Width	Length	B	C	S×ℓ	L ₁	T	K	N	f ₀	E	e ₀	D ₀		Grease nipple	Width	Height	Pitch	Length*	C	C ₀	M _a		M _b		M _c	LM block	LM rail		
	M	W	L															W ₁ 0 -0.05	W ₂	M ₁	F	d ₁ ×d ₂ ×h	Max	kN	kN	1 block	Double blocks	1 block	Double blocks	1 block	kg
SNS 25R SNS 25LR	31	50	83.6 102.8	32	35 50	M6×8	62.4 81.6	9.7	25.5	7	6	12	4	3.9	B-M6F	5.5	25	12.5	17	40	6×9.5×8.5	2500	37 44	61 78	0.544 0.915	2.88 4.41	0.504 0.847	2.67 4.09	0.648 0.826	0.4 0.6	3.1
SNS 30R SNS 30LR	38	60	98 120.5	40	40 60	M8×10	72.1 94.6	9.7	31	7	7	12	6.5	3.9	B-M6F	7	28	16	21	80	7×11×9	3000	52 62	81 106	0.821 1.43	4.5 7.04	0.761 1.33	4.17 6.53	0.962 1.25	0.7 0.9	4.4
SNS 35R SNS 35LR	44	70	110.3 135.8	50	50 72	M8×12	79 104.5	11.7	35	8	8	12	6	5.2	B-M6F	9	34	18	24.5	80	9×14×12	3000	69 83	110 144	1.27 2.11	6.81 10.7	1.17 1.96	6.32 10	1.56 2.05	1 1.4	6.2
SNS 45R SNS 45LR	52	86	139 171.8	60	60 80	M10×17	105 137.8	14.7	40.4	10	8	16	8.5	5.2	B-PT1/8	11.5	45	20.5	29	105	14×20×17	3090	101 123	167 222	2.63 4.29	12.7 20.8	2.43 3.97	11.8 19.3	3.15 4.21	1.9 2.4	9.8
SNS 55R SNS 55LR	63	100	163.3 200.5	65	75 95	M12×18	123.6 160.8	17.7	49	11	10	16	10	5.2	B-PT1/8	14	53	23.5	36.5	120	16×23×20	3060	136 164	225 295	3.96 6.66	20.4 32.4	3.67 6.17	19 30	4.97 6.52	3.1 4	14.5
SNS 65R SNS 65LR	75	126	186.4 246.4	76	70 110	M16×20	143.6 203.6	21.6	60	16	15	16	9	8.2	B-PT1/8	15	63	31.5	43	150	18×26×22	3000	199 261	315 441	6.4 12.7	32.7 59.1	5.93 11.7	30.3 54.8	8.24 11.5	5.6 8	20.5
SNS 85LR	90	156	302.8	100	140	M18×25	251	27.3	73	20	20	16	10	8.2	B-PT1/8	17	85	35.5	48	180	24×35×28	3000	422	679	23.9	112	22.1	104	23.7	14.8	29.5

Model number coding

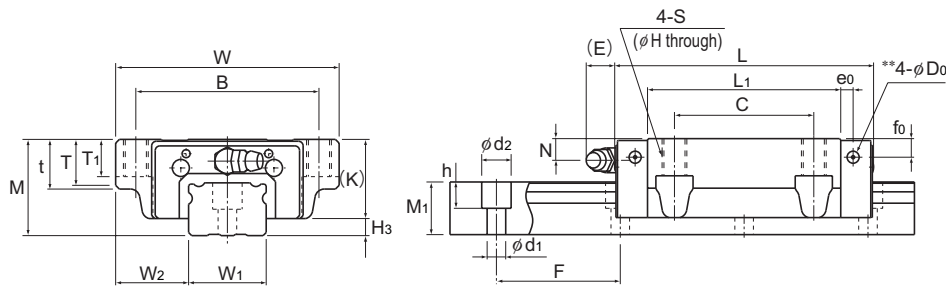


(*1) See contamination protection accessory on A-368. (*2) See A-113. (*3) See A-119. (*4) Specify the plate cover or the steel tape. (*5) See A-59.

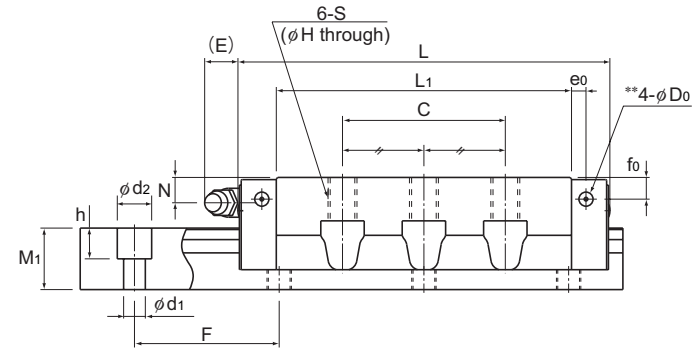
Note) This model number indicates that a single-rail unit constitutes one set. (i.e., required number of sets when 2 rails are used in parallel is 2 at a minimum.) Those models equipped with QZ Lubricator cannot have a grease nipple.

Note) Pilot holes for side nipples** are not drilled through in order to prevent foreign material from entering the product. THK will mount grease nipples per your request. Therefore, do not use the side nipple pilot holes** for purposes other than mounting a grease nipple.
The maximum length under "Length*" indicates the standard maximum length of an LM rail. (See B-42.)
Static permissible moment*: 1 block: static permissible moment value with 1 LM block
Double blocks: static permissible moment value with 2 blocks closely contacting with each other

Models SNR-C and SNR-LC



Model SNR-C

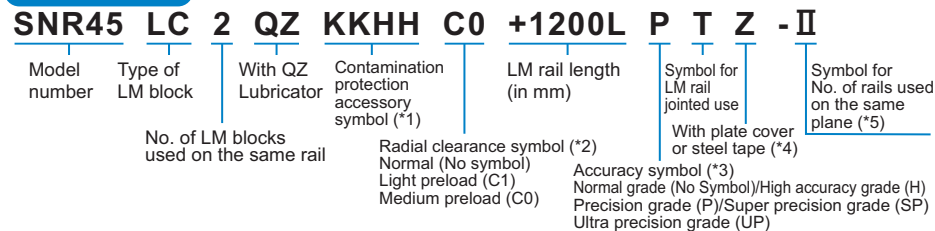


Model SNR-LC

Unit: mm

Model No.	Outer dimensions			LM block dimensions														H ₃	LM rail dimensions					Basic load rating		Static permissible moment kN-m*					Mass			
	Height M	Width W	Length L	B	C	S	H	L ₁	t	T	T ₁	K	N	f ₀	E	e ₀	D ₀		Grease nipple	Width W ₁ 0 -0.05	Height M ₁	Pitch F	Length* Max	C kN	C ₀ kN	M _a		M _b		M _c	LM block kg	LM rail kg/m		
																										1 block	Double blocks	1 block	Double blocks	1 block				
SNR 25C SNR 25LC	31	72	83.6 102.8	59	45	M8	6.8	62.4 81.6	16	14.8	12	25.5	7	6	12	4	3.9	B-M6F	5.5	25	23.5	17	40	6×9.5×8.5	2500	48 57	79 101	0.682 1.14	3.62 5.55	0.427 0.708	2.25 3.4	0.868 1.1	0.6 0.8	3.1
SNR 30C SNR 30LC	38	90	98 120.5	72	52	M10	8.5	72.1 94.6	18	16.8	14	31	7	7	12	6.5	3.9	B-M6F	7	28	31	21	80	7×11×9	3000	68 81	106 138	1.04 1.81	5.7 8.89	0.653 1.12	3.56 5.47	1.3 1.69	1 1.3	4.4
SNR 35C SNR 35LC	44	100	110.3 135.8	82	62	M10	8.5	79 104.5	20	18.8	16	35	8	8	12	6	5.2	B-M6F	9	34	33	24.5	80	9×14×12	3000	90 108	144 188	1.61 2.68	8.64 13.6	1.01 1.67	5.39 8.49	2.13 2.79	1.5 2	6.2
SNR 45C SNR 45LC	52	120	139 171.8	100	80	M12	10.5	105 137.8	22	20.5	20	40.4	10	8	16	8.5	5.2	B-PT1/8	11.5	45	37.5	29	105	14×20×17	3090	132 161	216 288	3.29 5.4	16 26.2	2.03 3.35	9.86 16.2	4.21 5.64	2.3 3.4	9.8
SNR 55C SNR 55LC	63	140	163.3 200.5	116	95	M14	12.5	123.6 160.8	24	22.5	22	49	11	10	16	10	5.2	B-PT1/8	14	53	43.5	36.5	120	16×23×20	3060	177 214	292 383	4.99 8.41	25.7 40.9	3.11 5.22	16 25.3	6.69 8.78	3.6 5.5	14.5
SNR 65C SNR 65LC	75	170	186.4 246.4	142	110	M16	14.5	143.6 203.6	28	26	25	60	16	15	16	9	8.2	B-PT1/8	15	63	53.5	43	150	18×26×22	3000	260 340	409 572	8.05 15.9	41.2 74.5	5.03 9.84	25.6 45.7	11 15.4	7.4 10.5	20.5
SNR 85LC	90	215	302.8	185	140	M20	17.6	251	34	32	28	73	20	20	16	10	8.2	B-PT1/8	17	85	65	48	180	24×35×28	3000	550	887	30.3	142	18.7	87.6	31.9	20.0	29.5

Model number coding

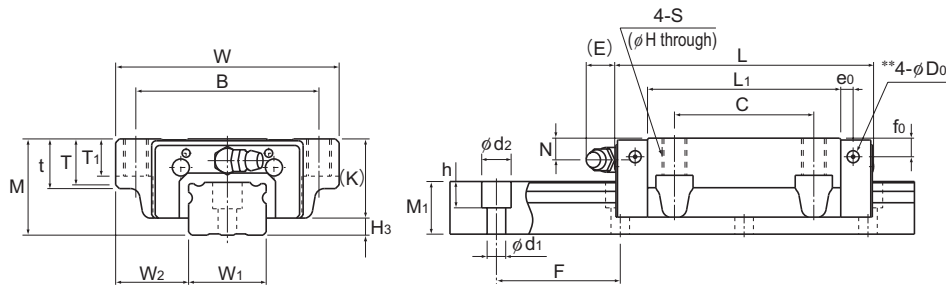


(*1) See contamination protection accessory on A-368. (*2) See A-113. (*3) See A-119. (*4) Specify the plate cover or the steel tape. (*5) See A-59.

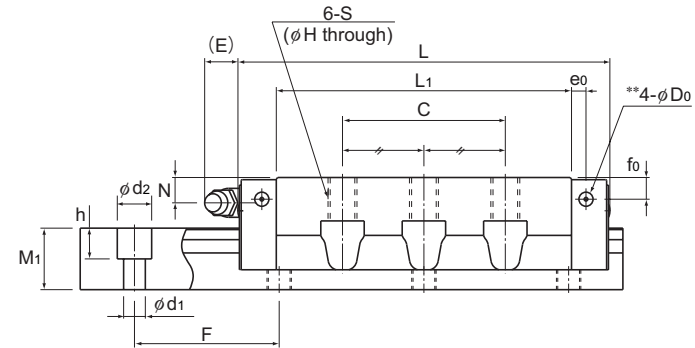
Note) Pilot holes for side nipples** are not drilled through in order to prevent foreign material from entering the product. THK will mount grease nipples per your request. Therefore, do not use the side nipple pilot holes** for purposes other than mounting a grease nipple.
The maximum length under "Length*" indicates the standard maximum length of an LM rail. (See B-42.)
Static permissible moment*: 1 block: static permissible moment value with 1 LM block
Double blocks: static permissible moment value with 2 blocks closely contacting with each other

Note) This model number indicates that a single-rail unit constitutes one set. (i.e., required number of sets when 2 rails are used in parallel is 2 at a minimum.)
Those models equipped with QZ Lubricator cannot have a grease nipple.

Models SNS-C and SNS-LC



Model SNS-C

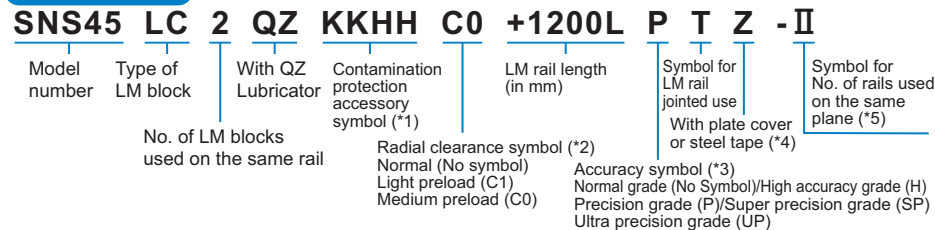


Model SNS-LC

Unit: mm

Model No.	Outer dimensions			LM block dimensions														H ₃	LM rail dimensions					Basic load rating		Static permissible moment kN-m*					Mass			
	Height	Width	Length	B	C	S	H	L ₁	t	T	T ₁	K	N	f ₀	E	e ₀	D ₀		Grease nipple	Width	Height	Pitch	Length*	C	C ₀	M _a		M _b		M _c	LM block	LM rail		
	M	W	L																	H ₃	W ₁ 0 -0.05	W ₂	M ₁	F	d ₁ × d ₂ × h	Max	kN	kN	1 block	Double blocks	1 block	Double blocks	1 block	kg
SNS 25C SNS 25LC	31	72	83.6 102.8	59	45	M8	6.8	62.4 81.6	16	14.8	12	25.5	7	6	12	4	3.9	B-M6F	5.5	25	23.5	17	40	6 × 9.5 × 8.5	2500	37 44	61 78	0.544 0.915	2.88 4.41	0.504 0.847	2.67 4.09	0.648 0.826	0.6 0.8	3.1
SNS 30C SNS 30LC	38	90	98 120.5	72	52	M10	8.5	72.1 94.6	18	16.8	14	31	7	7	12	6.5	3.9	B-M6F	7	28	31	21	80	7 × 11 × 9	3000	52 62	81 106	0.821 1.43	4.5 7.04	0.761 1.33	4.17 6.53	0.962 1.25	1 1.3	4.4
SNS 35C SNS 35LC	44	100	110.3 135.8	82	62	M10	8.5	79 104.5	20	18.8	16	35	8	8	12	6	5.2	B-M6F	9	34	33	24.5	80	9 × 14 × 12	3000	69 83	110 144	1.27 2.11	6.81 10.7	1.17 1.96	6.32 10	1.56 2.05	1.5 2	6.2
SNS 45C SNS 45LC	52	120	139 171.8	100	80	M12	10.5	105 137.8	22	20.5	20	40.4	10	8	16	8.5	5.2	B-PT1/8	11.5	45	37.5	29	105	14 × 20 × 17	3090	101 123	167 222	2.63 4.29	12.7 20.8	2.43 3.97	11.8 19.3	3.15 4.21	2.3 3.4	9.8
SNS 55C SNS 55LC	63	140	163.3 200.5	116	95	M14	12.5	123.6 160.8	24	22.5	22	49	11	10	16	10	5.2	B-PT1/8	14	53	43.5	36.5	120	16 × 23 × 20	3060	136 164	225 295	3.96 6.66	20.4 32.4	3.67 6.17	19 30	4.97 6.52	3.6 5.5	14.5
SNS 65C SNS 65LC	75	170	186.4 246.4	142	110	M16	14.5	143.6 203.6	28	26	25	60	16	15	16	9	8.2	B-PT1/8	15	63	53.5	43	150	18 × 26 × 22	3000	199 261	315 441	6.4 12.7	32.7 59.1	5.93 11.7	30.3 54.8	8.24 11.5	7.4 10.5	20.5
SNS 85LC	90	215	302.8	185	140	M20	17.6	251	34	32	28	73	20	20	16	10	8.2	B-PT1/8	17	85	65	48	180	24 × 35 × 28	3000	422	679	23.9	112	22.1	104	23.7	20.0	29.5

Model number coding

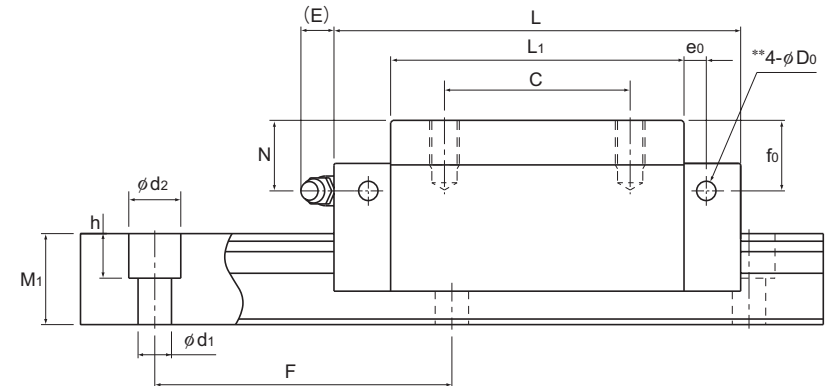
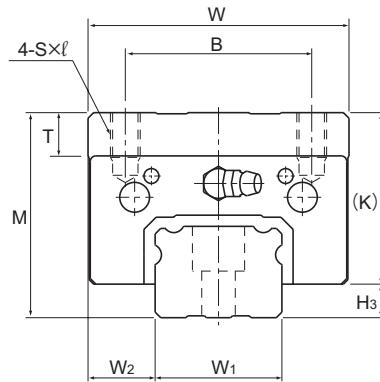


(*1) See contamination protection accessory on A-368. (*2) See A-113. (*3) See A-119. (*4) Specify the plate cover or the steel tape. (*5) See A-59.

Note) Pilot holes for side nipples** are not drilled through in order to prevent foreign material from entering the product. THK will mount grease nipples per your request. Therefore, do not use the side nipple pilot holes** for purposes other than mounting a grease nipple.
The maximum length under "Length*" indicates the standard maximum length of an LM rail. (See B-42.)
Static permissible moment*: 1 block: static permissible moment value with 1 LM block
Double blocks: static permissible moment value with 2 blocks closely contacting with each other

Note) This model number indicates that a single-rail unit constitutes one set. (i.e., required number of sets when 2 rails are used in parallel is 2 at a minimum.)
Those models equipped with QZ Lubricator cannot have a grease nipple.

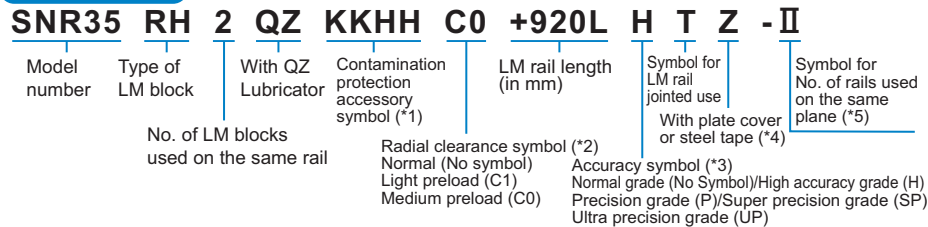
Models SNR-RH (Build to Order) and SNR-LRH (Build to Order)



Unit: mm

Model No.	Outer dimensions			LM block dimensions											Grease nipple	H ₃	LM rail dimensions					Basic load rating		Static permissible moment kN-m*					Mass		
	Height	Width	Length	B	C	S×ℓ	L ₁	T	K	N	f ₀	E	e ₀	D ₀			Width	Height	Pitch	Length*	C	C ₀	M _A		M _B		M _C	LM block	LM rail		
	M	W	L														W ₁ 0 -0.05	W ₂	M ₁	F	d ₁ ×d ₂ ×h	Max	kN	kN	1 block	Double blocks	1 block	Double blocks	1 block	kg	kg/m
SNR 35RH SNR 35LRH	55	70	110.3 135.8	50	72	M8×12	79 104.5	11.7	46	19	19	12	6	5.2	B-M6F	9	34	18	24.5	80	9×14×12	3000	90 108	144 188	1.61 2.68	8.64 13.6	1.01 1.67	5.39 8.49	2.13 2.79	1.5 2	6.2
SNR 45RH SNR 45LRH	70	86	139 171.8	60	80	M10×17	105 137.8	14.7	58.4	28	26	16	8.5	5.2	B-PT1/8	11.5	45	20.5	29	105	14×20×17	3090	132 161	216 288	3.29 5.4	16 26.2	2.03 3.35	9.86 16.2	4.21 5.64	3.2 4.1	9.8
SNR 55RH SNR 55LRH	80	100	163.3 200.5	75	95	M12×18	123.6 160.8	17.7	66	28	27	16	10	5.2	B-PT1/8	14	53	23.5	36.5	120	16×23×20	3060	177 214	292 383	4.99 8.41	25.7 40.9	3.11 5.22	16 25.3	6.69 8.78	4.7 6.2	14.5

Model number coding

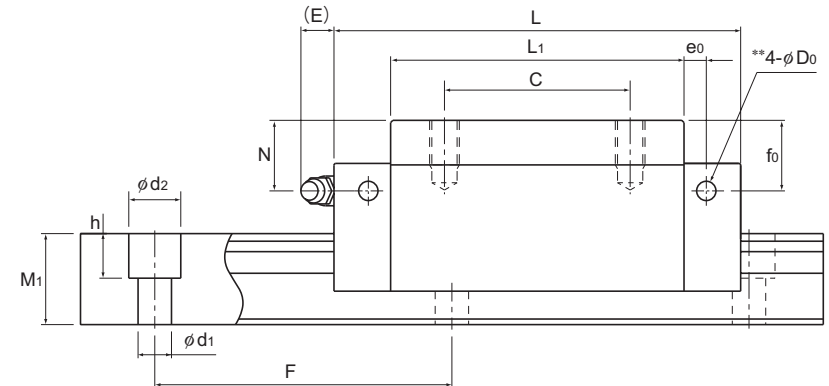
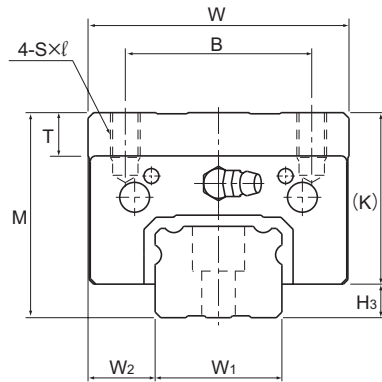


(*1) See contamination protection accessory on A-368. (*2) See A-113. (*3) See A-119.
(*4) Specify the plate cover or the steel tape. (*5) See A-59.

Note) This model number indicates that a single-rail unit constitutes one set. (i.e., required number of sets when 2 rails are used in parallel is 2 at a minimum.)
Those models equipped with QZ Lubricator cannot have a grease nipple.

Note) Pilot holes for side nipples** are not drilled through in order to prevent foreign material from entering the product. THK will mount grease nipples per your request. Therefore, do not use the side nipple pilot holes** for purposes other than mounting a grease nipple.
The maximum length under "Length*" indicates the standard maximum length of an LM rail. (See B-42.)
Static permissible moment*: 1 block: static permissible moment value with 1 LM block
Double blocks: static permissible moment value with 2 blocks closely contacting with each other

Models SNS-RH (Build to Order) and SNS-LRH (Build to Order)



Unit: mm

Model No.	Outer dimensions			LM block dimensions											Grease nipple	H ₃	LM rail dimensions					Basic load rating		Static permissible moment kN-m*					Mass		
	Height	Width	Length	B	C	S×ℓ	L ₁	T	K	N	f ₀	E	e ₀	D ₀			Width	Height	Pitch	Length*	C	C ₀	M _A		M _B		M _C	LM block	LM rail		
	M	W	L														W ₁	M ₁	F	Max	kN	kN	1 block	Double blocks	1 block	Double blocks	1 block	kg	kg/m		
SNS 35RH SNS 35LRH	55	70	110.3 135.8	50	72	M8×12	79 104.5	11.7	46	19	19	12	6	5.2	B-M6F	9	34	18	24.5	80	9×14×12	3000	69 83	110 144	1.27 2.11	6.81 10.7	1.17 1.96	6.32 10	1.56 2.05	1.5 2	6.2
SNS 45RH SNS 45LRH	70	86	139 171.8	60	80	M10×17	105 137.8	14.7	58.4	28	26	16	8.5	5.2	B-PT1/8	11.5	45	20.5	29	105	14×20×17	3090	101 123	167 222	2.63 4.29	12.7 20.8	2.43 3.97	11.8 19.3	3.15 4.21	3.2 4.1	9.8
SNS 55RH SNS 55LRH	80	100	163.3 200.5	75	95	M12×18	123.6 160.8	17.7	66	28	27	16	10	5.2	B-PT1/8	14	53	23.5	36.5	120	16×23×20	3060	136 164	225 295	3.96 6.66	20.4 32.4	3.67 6.17	19 30	4.97 6.52	4.7 6.2	14.5

Model number coding

SNS35 RH 2 QZ KKHH C0 +920L H T Z -II

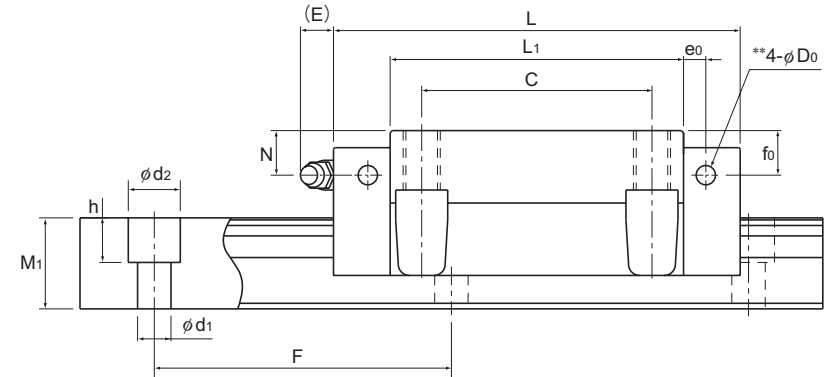
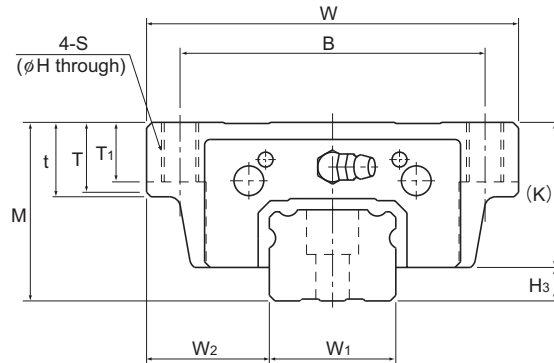
Model number	Type of LM block	With QZ Lubricator	Contamination protection accessory symbol (*1)	LM rail length (in mm)	Symbol for LM rail jointed use	Symbol for No. of rails used on the same plane (*5)
	No. of LM blocks used on the same rail		Radial clearance symbol (*2)		With plate cover or steel tape (*4)	
			Normal (No symbol) Light preload (C1) Medium preload (C0)	Accuracy symbol (*3) Normal grade (No Symbol)/High accuracy grade (H) Precision grade (P)/Super precision grade (SP) Ultra precision grade (UP)		

(*1) See contamination protection accessory on A-368. (*2) See A-113. (*3) See A-119.
(*4) Specify the plate cover or the steel tape. (*5) See A-59.

Note) This model number indicates that a single-rail unit constitutes one set. (i.e., required number of sets when 2 rails are used in parallel is 2 at a minimum.)
Those models equipped with QZ Lubricator cannot have a grease nipple.

Note) Pilot holes for side nipples** are not drilled through in order to prevent foreign material from entering the product. THK will mount grease nipples per your request. Therefore, do not use the side nipple pilot holes** for purposes other than mounting a grease nipple.
The maximum length under "Length*" indicates the standard maximum length of an LM rail. (See B-42.)
Static permissible moment*: 1 block: static permissible moment value with 1 LM block
Double blocks: static permissible moment value with 2 blocks closely contacting with each other

Models SNR-CH (Build to Order) and SNR-LCH (Build to Order)



Unit: mm

Model No.	Outer dimensions			LM block dimensions														H ₃	LM rail dimensions					Basic load rating		Static permissible moment kN-m*					Mass			
	Height	Width	Length	B	C	S	H	L ₁	t	T	T ₁	K	N	f ₀	E	e ₀	D ₀		Grease nipple	Width	Height	Pitch	Length*	C	C ₀	M _A		M _B		M _C	LM block	LM rail		
	M	W	L																		W ₁	W ₂	M ₁	F	d ₁ × d ₂ × h	Max	kN	kN	1 block	Double blocks	1 block	Double blocks	1 block	kg
SNR 35CH SNR 35LCH	48	100	110.3 135.8	82	62	M10	8.5	79 104.5	20	18.8	16	39	12	12	12	6	5.2	B-M6F	9	34	33	24.5	80	9 × 14 × 12	3000	90 108	144 188	1.61 2.68	8.64 13.6	1.01 1.67	5.39 8.49	2.13 2.79	1.7 2.2	6.2
SNR 45CH SNR 45LCH	60	120	139 171.8	100	80	M12	10.5	105 137.8	22	20.5	20	48.4	18	16	16	8.5	5.2	B-PT1/8	11.5	45	37.5	29	105	14 × 20 × 17	3090	132 161	216 288	3.29 5.4	16 26.2	2.03 3.35	9.86 16.2	4.21 5.64	3 4.2	9.8
SNR 55CH SNR 55LCH	70	140	163.3 200.5	116	95	M14	12.5	123.6 160.8	24	22.5	22	56	18	17	16	10	5.2	B-PT1/8	14	53	43.5	36.5	120	16 × 23 × 20	3060	177 214	292 383	4.99 8.41	25.7 40.9	3.11 5.22	16 25.3	6.69 8.78	4.4 6.5	14.5

Model number coding

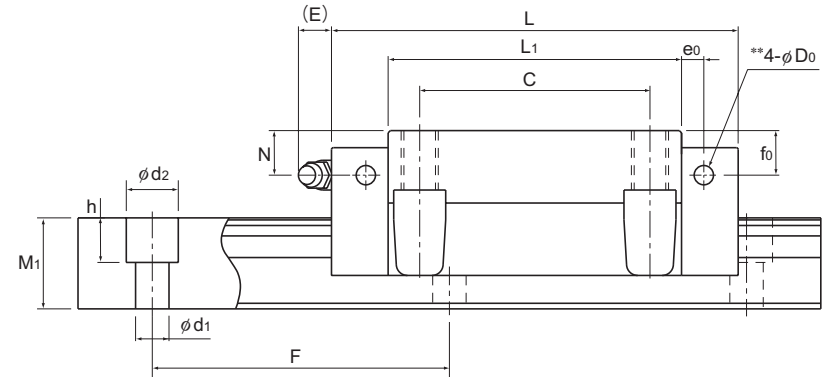
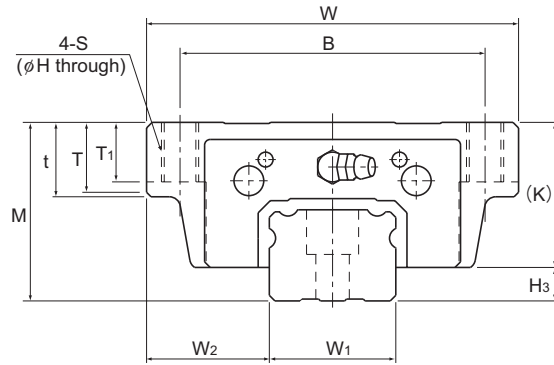
SNR45	LCH	2	QZ	KK	C0	+1000L	P	T	Z	-II
Model number	Type of LM block	No. of LM blocks used on the same rail	With QZ Lubricator	Contamination protection accessory symbol (*1)	Radial clearance symbol (*2) Normal (No symbol) Light preload (C1) Medium preload (C0)	LM rail length (in mm)	Symbol for LM rail jointed use	Accuracy symbol (*3) Normal grade (No Symbol)/High accuracy grade (H) Precision grade (P)/Super precision grade (SP) Ultra precision grade (UP)	With plate cover or steel tape (*4)	Symbol for No. of rails used on the same plane (*5)

(*1) See contamination protection accessory on A-368. (*2) See A-113. (*3) See A-119.
(*4) Specify the plate cover or the steel tape. (*5) See A-59.

Note) This model number indicates that a single-rail unit constitutes one set. (i.e., required number of sets when 2 rails are used in parallel is 2 at a minimum.)
Those models equipped with QZ Lubricator cannot have a grease nipple.

Note) Pilot holes for side nipples** are not drilled through in order to prevent foreign material from entering the product.
THK will mount grease nipples for your request. Therefore, do not use the side nipple pilot holes** for purposes other than mounting a grease nipple.
The maximum length under "Length*" indicates the standard maximum length of an LM rail. (See B-42.)
Static permissible moment*: 1 block: static permissible moment value with 1 LM block
Double blocks: static permissible moment value with 2 blocks closely contacting with each other

Models SNS-CH (Build to Order) and SNS-LCH (Build to Order)



Unit: mm

Model No.	Outer dimensions			LM block dimensions															H ₃	LM rail dimensions					Basic load rating		Static permissible moment kN-m*					Mass		
	Height	Width	Length	B	C	S	H	L ₁	t	T	T ₁	K	N	f ₀	E	e ₀	D ₀	Grease nipple		Width	Height	Pitch	Length *	C	C ₀	M _A		M _B		M _C	LM block	LM rail		
	M	W	L																		W ₁ 0 -0.05	W ₂	M ₁	F	d ₁ × d ₂ × h	Max	kN	kN	1 block	Double blocks	1 block	Double blocks	1 block	kg
SNS 35CH SNS 35LCH	48	100	110.3 135.8	82	62	M10	8.5	79 104.5	20	18.8	16	39	12	12	12	6	5.2	B-M6F	9	34	33	24.5	80	9 × 14 × 12	3000	69 83	110 144	1.27 2.11	6.81 10.7	1.17 1.96	6.32 10	1.56 2.05	1.7 2.2	6.2
SNS 45CH SNS 45LCH	60	120	139 171.8	100	80	M12	10.5	105 137.8	22	20.5	20	48.4	18	16	16	8.5	5.2	B-PT1/8	11.5	45	37.5	29	105	14 × 20 × 17	3090	101 123	167 222	2.63 4.29	12.7 20.8	2.43 3.97	11.8 19.3	3.15 4.21	3 4.2	9.8
SNS 55CH SNS 55LCH	70	140	163.3 200.5	116	95	M14	12.5	123.6 160.8	24	22.5	22	56	18	17	16	10	5.2	B-PT1/8	14	53	43.5	36.5	120	16 × 23 × 20	3060	136 164	225 295	3.96 6.66	20.4 32.4	3.67 6.17	19 30	4.97 6.52	4.4 6.5	14.5

Model number coding

SNS45 LCH 2 QZ KK C0 +1000L P T Z -II

Model number: SNS45
Type of LM block: LCH
With QZ Lubricator: 2
Contamination protection accessory symbol (*1): QZ
Radial clearance symbol (*2): KK
LM rail length (in mm): C0
Accuracy symbol (*3): +1000L
Symbol for LM rail jointed use: P
With plate cover or steel tape (*4): T
Symbol for No. of rails used on the same plane (*5): Z
Symbol for No. of rails used on the same plane (*5): -II

(*1) See contamination protection accessory on A-368. (*2) See A-113. (*3) See A-119.
(*4) Specify the plate cover or the steel tape. (*5) See A-59.

Note) This model number indicates that a single-rail unit constitutes one set. (i.e., required number of sets when 2 rails are used in parallel is 2 at a minimum.)
Those models equipped with QZ Lubricator cannot have a grease nipple.

Note) Pilot holes for side nipples** are not drilled through in order to prevent foreign material from entering the product. THK will mount grease nipples per your request. Therefore, do not use the side nipple pilot holes** for purposes other than mounting a grease nipple.
The maximum length under "Length*" indicates the standard maximum length of an LM rail. (See B-42.)
Static permissible moment*: 1 block: static permissible moment value with 1 LM block
Double blocks: static permissible moment value with 2 blocks closely contacting with each other

Standard Length and Maximum Length of the LM Rail

Table1 shows the standard lengths and the maximum lengths of model SNR/SNS variations. If the maximum length of the desired LM rail exceeds them, jointed rails will be used. Contact THK for details.

For the G dimension when a special length is required, we recommend selecting the corresponding G value from the table. The longer the G dimension is, the less stable the G area may become after installation, thus causing an adverse impact to accuracy.

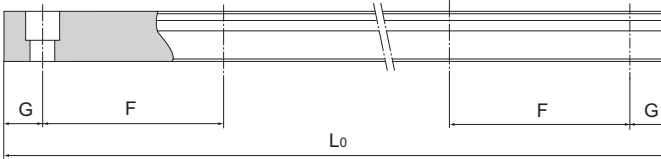


Table1 Standard Length and Maximum Length of the LM Rail for Models SNR/SNS

Unit: mm

Model No.	SNR/SNS 25	SNR/SNS 30	SNR/SNS 35	SNR/SNS 45	SNR/SNS 55	SNR/SNS 65	SNR/SNS 85
LM rail standard length (L ₀)	230	280	280	570	780	1270	1530
	270	360	360	675	900	1570	1890
	350	440	440	780	1020	2020	2250
	390	520	520	885	1140	2620	2610
	470	600	600	990	1260		
	510	680	680	1095	1380		
	590	760	760	1200	1500		
	630	840	840	1305	1620		
	710	920	920	1410	1740		
	750	1000	1000	1515	1860		
	830	1080	1080	1620	1980		
	950	1160	1160	1725	2100		
	990	1240	1240	1830	2220		
	1070	1320	1320	1935	2340		
	1110	1400	1400	2040	2460		
	1190	1480	1480	2145	2580		
	1230	1560	1560	2250	2700		
	1310	1640	1640	2355	2820		
	1350	1720	1720	2460	2940		
	1430	1800	1800	2565	3060		
	1470	1880	1880	2670			
	1550	1960	1960	2775			
	1590	2040	2040	2880			
	1710	2200	2200	2985			
	1830	2360	2360	3090			
	1950	2520	2520				
2070	2680	2680					
2190	2840	2840					
2310	3000	3000					
2430							
2470							
Standard pitch F	40	80	80	105	120	150	180
G	15	20	20	22.5	30	35	45
Max length	2500	3000	3000	3090	3060	3000	3000

Note1) The maximum length varies with accuracy grades. Contact THK for details.

Note2) If jointed rails are not allowed and a greater length than the maximum values above is required, contact THK.