

SHW



Caged Ball LM Guides

B Product Specifications

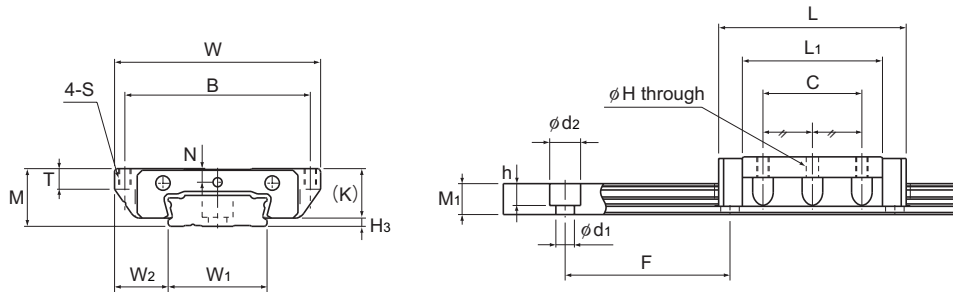
Dimensional Drawing, Dimensional Table	
Model SHW-CA	B-44
Models SHW-CR and SHW-HR	B-46
Standard Length and Maximum Length of the LM Rail	
	B-48
Options	
The LM Block Dimension (Dimension L) with LaCS and Seals Attached	B-225
Incremental dimension with grease nipple (when LaCS is attached)	B-232
Dedicated Bellows JSHW for Model SHW ..	B-238
Cap C	B-250
LM Block Dimension (Dimension L) with QZ Attached	B-251
Gease Nipple and Greasing Hole Model SHW	B-256

A Technical Descriptions of the Products (Separate)

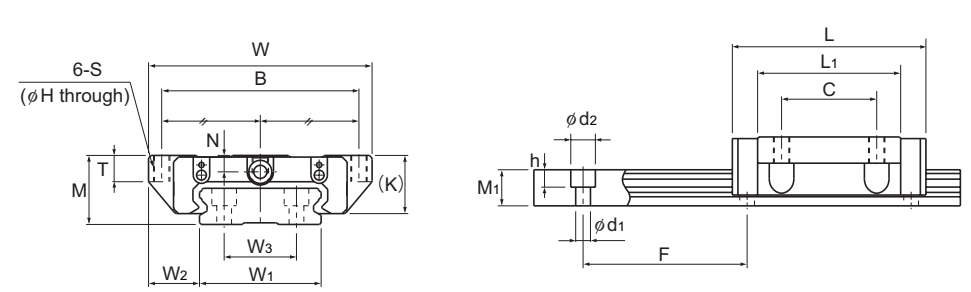
Technical Descriptions	
Structure and features	A-157
Types and Features	A-158
Rated Loads in All Directions	A-158
Equivalent Load	A-159
Service Life	A-100
Radial Clearance Standard	A-113
Accuracy Standards	A-119
Shoulder Height of the Mounting Base and the Corner Radius	A-330
Error Allowance in the Parallelism between Two Rails	A-334
Error Allowance in Vertical Level between Two Rails	A-337

* Please see the separate "A Technical Descriptions of the Products".

Model SHW-CA



Models SHW12CAM and SHW14CAM



Models SHW17CAM and SHW21 to 50CA

Unit: mm

Model No.	Outer dimensions			LM block dimensions									LM rail dimensions						Basic load rating		Static permissible moment kN-m*					Mass		
	Height	Width	Length	B	C	S	H	L ₁	T	K	N	H ₃	Width	Height	Pitch	Length*	C	C ₀	M _A		M _B		M _C	LM block	LM rail			
	M	W	L										W ₁	W ₂	W ₃	M ₁	F	d ₁ × d ₂ × h	Max	kN	kN	1 block	Double blocks	1 block	Double blocks	1 block	kg	kg/m
SHW 12CAM	12	40	37	35	18	M3	2.5	27	4	10	2.8	2	18	11	—	6.6	40	4.5 × 7.5 × 5.3	1000	4.31	5.66	0.0228	0.12	0.0228	0.12	0.0405	0.05	0.8
SHW 14CAM	14	50	45.5	45	24	M3	2.5	34	5	12	3.3	2	24	13	—	7.5	40	4.5 × 7.5 × 5.3	1430	7.05	8.98	0.0466	0.236	0.0466	0.236	0.0904	0.1	1.23
SHW 17CAM	17	60	51	53	26	M4	3.3	38	6	14.5	4	2.5	33	13.5	18	8.6	40	4.5 × 7.5 × 5.3	1800	7.65	10.18	0.0591	0.298	0.0591	0.298	0.164	0.15	1.9
SHW 21CA	21	68	59	60	29	M5	4.4	43.6	8	17.7	5	3	37	15.5	22	11	50	4.5 × 7.5 × 5.3	1900	8.24	12.8	0.0806	0.434	0.0806	0.434	0.229	0.24	2.9
SHW 27CA	27	80	72.8	70	40	M6	5.3	56.6	10	23.5	6	3	42	19	24	15	60	4.5 × 7.5 × 5.3	3000	16	22.7	0.187	0.949	0.187	0.949	0.455	0.47	4.5
SHW 35CA	35	120	107	107	60	M8	6.8	83	14	31	7.6	4	69	25.5	40	19	80	7 × 11 × 9	3000	35.5	49.2	0.603	3	0.603	3	1.63	1.4	9.6
SHW 50CA	50	162	141	144	80	M10	8.6	107	18	46	14	3.4	90	36	60	24	80	9 × 14 × 12	3000	70.2	91.4	1.46	7.37	1.46	7.37	3.97	3.7	15

Note) Since stainless steel is used in the LM block, LM rail and balls, these models are highly resistant to corrosion and environment.

Note) If a grease nipple is required, indicate "with grease nipple;" if a greasing hole is required, indicate "with a tapped hole for greasing."

The maximum length under "Length*" indicates the standard maximum length of an LM rail. (See B-48.)

Static permissible moment*: 1 block: static permissible moment value with 1 LM block

Double blocks: static permissible moment value with 2 blocks closely contacting with each other

Model number coding

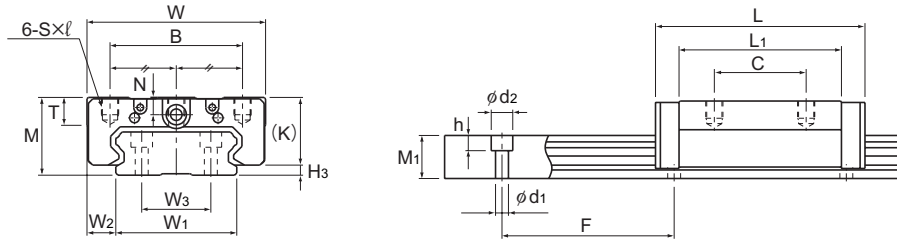
SHW17	CA	2	QZ	UU	C1	M	+580L	P	M	-II
Model number	Type of LM block	No. of LM blocks used on the same rail	With QZ Lubricator	Contamination protection accessory symbol (*1)	Radial clearance symbol (*2) Normal (No symbol) Light preload (C1) Medium preload (C0)	Stainless steel LM block	LM rail length (in mm)	Accuracy symbol (*3) Normal grade (No Symbol)/High accuracy grade (H) Precision grade (P)/Super precision grade (SP) Ultra precision grade (UP)	Stainless steel LM rail	Symbol for No. of rails used on the same plane (*4)

(*1) See contamination protection accessory on A-368. (*2) See A-113. (*3) See A-119. (*4) See A-59.

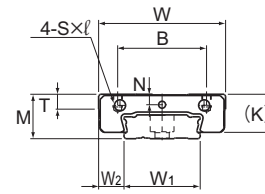
Note) This model number indicates that a single-rail unit constitutes one set. (i.e., required number of sets when 2 rails are used in parallel is 2 at a minimum.)

Those models equipped with QZ Lubricator cannot have a grease nipple.

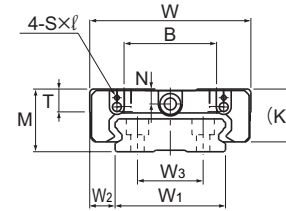
Models SHW-CR and SHW-HR



Models SHW27 to 50CR



Models SHW12CRM, SHW12HRM and SHW14CRM



Models SHW17CRM and SHW21CRM

Unit: mm

Model No.	Outer dimensions			LM block dimensions								H ₃	LM rail dimensions							Basic load rating		Static permissible moment kN-m*					Mass	
	Height	Width	Length	B	C	S × l	L ₁	T	K	N	W ₁		W ₂	W ₃	M ₁	Pitch	Length*	C	C ₀	M _A		M _B		M _C	LM block	LM rail		
	M	W	L																	1 block	Double blocks	1 block	Double blocks	1 block			kg	kg/m
SHW 12CRM	12	30	37	21	12	M3×3.5	27	4	10	2.8	2	18	6	—	6.6	40	4.5×7.5×5.3	1000	4.31	5.66	0.0228	0.12	0.0228	0.12	0.0405	0.04	0.8	
SHW 12HRM	12	30	50.4	21	24	M3×3.5	40.4	4	10	2.8	2	18	6	—	6.6	40	4.5×7.5×5.3	1000	5.56	8.68	0.0511	0.246	0.0511	0.246	0.0621	0.06	0.8	
SHW 14CRM	14	40	45.5	28	15	M3×4	34	5	12	3.3	2	24	8	—	7.5	40	4.5×7.5×5.3	1430	7.05	8.98	0.0466	0.236	0.0466	0.236	0.0904	0.08	1.23	
SHW 17CRM	17	50	51	29	15	M4×5	38	6	14.5	4	2.5	33	8.5	18	8.6	40	4.5×7.5×5.3	1800	7.65	10.18	0.0591	0.298	0.0591	0.298	0.164	0.13	1.9	
SHW 21CR	21	54	59	31	19	M5×6	43.6	8	17.7	5	3	37	8.5	22	11	50	4.5×7.5×5.3	1900	8.24	12.8	0.0806	0.434	0.0806	0.434	0.229	0.19	2.9	
SHW 27CR	27	62	72.8	46	32	M6×6	56.6	10	23.5	6	3	42	10	24	15	60	4.5×7.5×5.3	3000	16	22.7	0.187	0.949	0.187	0.949	0.455	0.36	4.5	
SHW 35CR	35	100	107	76	50	M8×8	83	14	31	7.6	4	69	15.5	40	19	80	7×11×9	3000	35.5	49.2	0.603	3	0.603	3	1.63	1.2	9.6	
SHW 50CR	50	130	141	100	65	M10×15	107	18	46	14	3.4	90	20	60	24	80	9×14×12	3000	70.2	91.4	1.46	7.37	1.46	7.37	3.97	3	15	

Note) Symbol M indicates that stainless steel is used in the LM block, LM rail and balls. Those models marked with this symbol are therefore highly corrosion resistance and environment.

Note) If a grease nipple is required, indicate "with grease nipple;" if a greasing hole is required, indicate "with a tapped hole for greasing."

The maximum length under "Length*" indicates the standard maximum length of an LM rail. (See B-48.)

Static permissible moment*: 1 block: static permissible moment value with 1 LM block

Double blocks: static permissible moment value with 2 blocks closely contacting with each other

Model number coding

SHW27 CR 2 QZ KKHH C1 +820L P

Model number

Type of LM block

With QZ Lubricator

Contamination protection accessory symbol (*1)

LM rail length (in mm)

Accuracy symbol (*3)
 Normal grade (No Symbol)
 High accuracy grade (H)
 Precision grade (P)
 Super precision grade (SP)
 Ultra precision grade (UP)

No. of LM blocks used on the same rail

Radial clearance symbol (*2)
 Normal (No symbol)
 Light preload (C1)
 Medium preload (C0)

(*1) See contamination protection accessory on A-368. (*2) See A-113. (*3) See A-119.

Note) Those models equipped with QZ Lubricator cannot have a grease nipple.

Standard Length and Maximum Length of the LM Rail

Table1 shows the standard lengths and the maximum lengths of model SHW variations. If the maximum length of the desired LM rail exceeds them, jointed rails will be used. Contact THK for details. For the G dimension when a special length is required, we recommend selecting the corresponding G value from the table. The longer the G dimension is, the less stable the G area may become after installation, thus causing an adverse impact to accuracy.

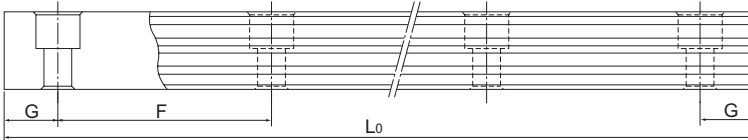


Table1 Standard Length and Maximum Length of the LM Rail for Model SHW

Unit: mm

Model No.	SHW 12	SHW 14	SHW 17	SHW 21	SHW 27	SHW 35	SHW 50
LM rail standard length (L ₀)	70	70	110	130	160	280	280
	110	110	190	230	280	440	440
	150	150	310	380	340	760	760
	190	190	470	480	460	1000	1000
	230	230	550	580	640	1240	1240
	270	270		780	820	1560	1640
	310	310					2040
	390	390					
	470	470					
		550					
	670						
Standard pitch F	40	40	40	50	60	80	80
G	15	15	15	15	20	20	20
Max length	1000	1430	1800	1900	3000	3000	3000

Note1) The maximum length varies with accuracy grades. Contact THK for details.

Note2) If jointed rails are not allowed and a greater length than the maximum values above is required, contact THK.

Note3) Models SHW12, 14 and 17 are made of stainless steel.