

RSR-Z

LM Guide

B Product Specifications

Dimensional Drawing, Dimensional Table

Model RSR-ZM	B-122
Models RSR-WZN	B-124

Standard Length and Maximum Length of the LM Rail	B-126
--	-------

Options	B-223
The LM Block Dimension (Dimension L) with LaCS and Seals Attached	B-227

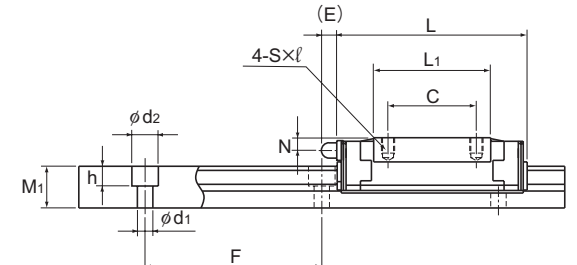
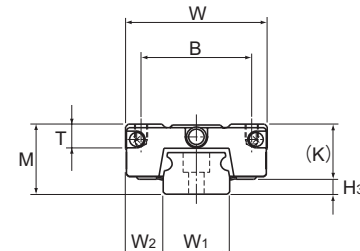
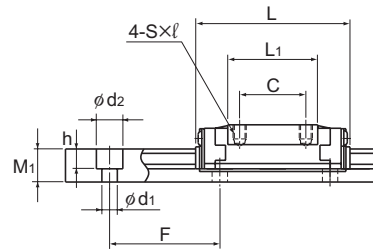
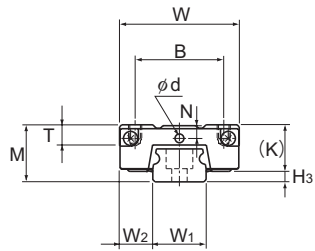
A Technical Descriptions of the Products (Separate)

Technical Descriptions

Structure and features	A-209
Types and Features	A-210
Rated Loads in All Directions	A-211
Equivalent Load	A-211
Service Life	A-100
Radial Clearance Standard	A-114
Accuracy Standards	A-126
Shoulder Height of the Mounting Base and the Corner Radius	A-332
Error Allowance in the Parallelism between Two Rails	A-334
Error Allowance in Vertical Level between Two Rails	A-337
Accuracy of the Mounting Surface	A-212
Flatness of the Mounting Surface	A-335

* Please see the separate "A Technical Descriptions of the Products".

Model RSR-ZM



Models RSR7 to 12ZM

Model RSR15ZM

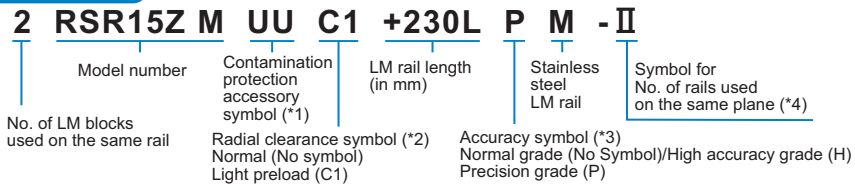
Unit: mm

Model No.	Outer dimensions			LM block dimensions										H ₃	LM rail dimensions					Basic load rating		Static permissible moment N-m*					Mass	
	Height	Width	Length	B	C	S×l	L ₁	T	K	N	E	Greas-ing hole	Grease nipple		Width	Height	Pitch	Length*	C	C ₀	M _A		M _B		M _C	LM block	LM rail	
	M	W	L									d			W ₁	W ₂	M ₁	F	d ₁ ×d ₂ ×h	Max	kN	kN	1 block	Double blocks	1 block	Double blocks	1 block	kg
RSR 7ZM	8	17	23.4	12	8	M2×2.5	13.2	3.4	6.5	1.6	—	1.5	—	7 ⁰ _{-0.02}	5	4.7	15	2.4×4.2×2.3	300	0.88	1.37	2.93	20.7	2.93	20.7	5	0.008	0.23
RSR 9ZM	10	20	30.8	15	10	M3×2.7	19.4	4.6	7.8	2.4	—	1.6	—	9 ⁰ _{-0.02}	5.5	5.5	20	3.5×6×3.3	1000	1.47	2.25	7.34	43	7.34	43	10.4	0.014	0.32
RSR 12ZM	13	27	35	20	15	M3×3.2	20.4	4.5	10.6	3.1	—	2	—	12 ⁰ _{-0.025}	7.5	7.5	25	3.5×6×4.5	1340	2.65	4.02	11.4	74.9	10.1	67.7	19.2	0.028	0.58
RSR 15ZM	16	32	43	25	20	M3×3.5	26.5	5.5	12.6	2.9	3.6	—	PB107	15 ⁰ _{-0.025}	8.5	9.5	40	3.5×6×4.5	1430	4.41	6.57	23.7	149	21.1	135	38.8	0.05	0.925

Note) Since stainless steel is used in the LM block, LM rail and balls, these models are highly resistant to corrosion and environment.

Note) The maximum length under "Length*" indicates the standard maximum length of an LM rail. (See B-126.)
 Static permissible moment*: 1 block: static permissible moment value with 1 LM block
 Double blocks: static permissible moment value with 2 blocks closely contacting with each other

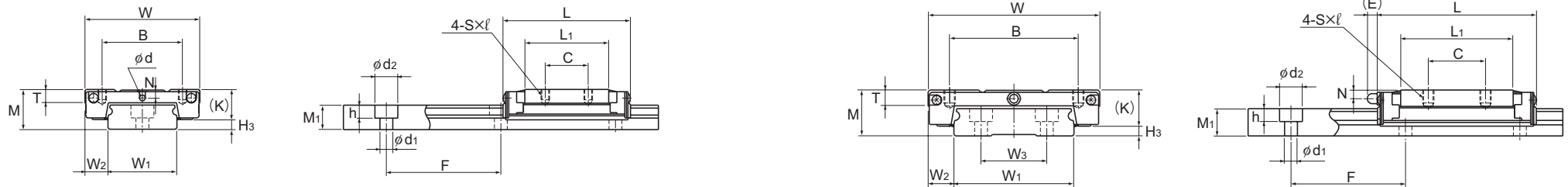
Model number coding



(*1) See contamination protection accessory on A-368. (*2) See A-114. (*3) See A-126. (*4) See A-59.

Note) This model number indicates that a single-rail unit constitutes one set. (i.e., required number of sets when 2 rails are used in parallel is 2 at a minimum.)

Model RSR-WZN



Models RSR7 to 12WZM

Model RSR15WZM

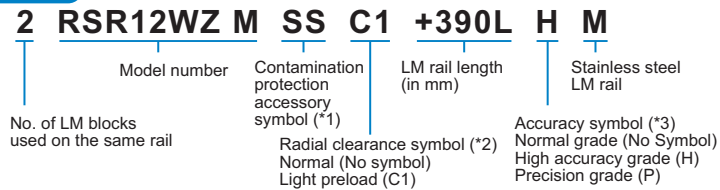
Unit: mm

Model No.	Outer dimensions			LM block dimensions										LM rail dimensions						Basic load rating		Static permissible moment N-m*					Mass			
	Height	Width	Length	B	C	S×l	L ₁	T	K	N	E	Greasing hole d	Grease nipple	H ₃	Width	Height	Pitch	Length*	C	C ₀	M _a		M _b		M _c	LM block kg	LM rail kg/m			
	M	W	L																		1 block	Double blocks	1 block	Double blocks	1 block					
RSR 7WZM	9	25	31.5	19	10	M3×2.5	19.7	3.4	7	1.8	—	1.6	—	2	14 ⁰ _{-0.05}	5.5	—	5.2	30	3.5×6×3.2	400	1.37	2.16	6.54	42.1	6.54	42.1	15.4	0.018	0.51
RSR 9WZM	12	30	39	21	12	M3×2.8	27	3.9	9.1	2.3	—	1.6	—	2.9	18 ⁰ _{-0.05}	6	—	7.5	30	3.5×6×4.5	1000	2.45	3.92	16	92.9	16	92.9	36	0.03	1.08
RSR 12WZM	14	40	44.5	28	15	M3×3.6	29.3	4.5	10.6	3	—	2	—	3.4	24 ⁰ _{-0.05}	8	—	8.5	40	4.5×8×4.5	1430	4.02	6.08	24.5	138	21.7	123	59.5	0.06	1.5
RSR 15WZM	16	60	55.5	45	20	M4×4.5	39.3	5.4	12.6	3	3.6	—	PB107	3.4	42 ⁰ _{-0.05}	9	23	9.5	40	4.5×8×4.5	1800	6.66	9.8	50.3	278	44.4	248	168	0.135	3

Note) Since stainless steel is used in the LM block, LM rail and balls, these models are highly resistant to corrosion and environment.

Note) The maximum length under "Length*" indicates the standard maximum length of an LM rail. (See B-126.)
 Static permissible moment*: 1 block: static permissible moment value with 1 LM block
 Double blocks: static permissible moment value with 2 blocks closely contacting with each other

Model number coding



(*1) See contamination protection accessory on A-368. (*2) See A-114. (*3) See A-126.

Standard Length and Maximum Length of the LM Rail

Table1 shows the standard lengths and the maximum lengths of model RSR-Z/WZ variations.

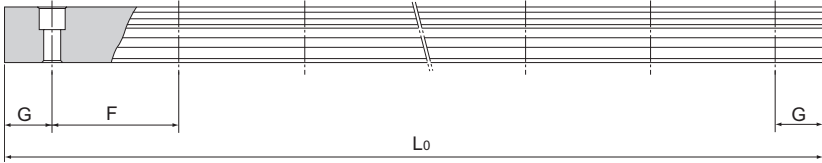


Table1 Standard Length and Maximum Length of the LM Rail for Model RSR-Z/WZ

Unit: mm

Model No.	RSR 7Z	RSR 9Z	RSR 12Z	RSR 15Z	RSR 7WZ	RSR 9WZ	RSR 12WZ	RSR 15WZ
LM rail standard length (L ₀)	40	55	70	70	50	50	70	110
	55	75	95	110	80	80	110	150
	70	95	120	150	110	110	150	190
	85	115	145	190	140	140	190	230
	100	135	170	230	170	170	230	270
	130	155	195	270	200	200	270	310
		175	220	310	260	260	310	430
		195	245	350	290	290	390	550
		275	270	390		320	470	670
		375	320	430			550	790
		370	470					
		470	550					
		570	670					
			870					
Standard pitch F	15	20	25	40	30	30	40	40
G	5	7.5	10	15	10	10	15	15
Max length	300	1000	1340	1430	400	1000	1430	1800

Note1) The maximum length varies with accuracy grades. Contact THK for details.

Note2) The LM rails of these models are all made of stainless steel.