

RSH

LM Guide

B Product Specifications

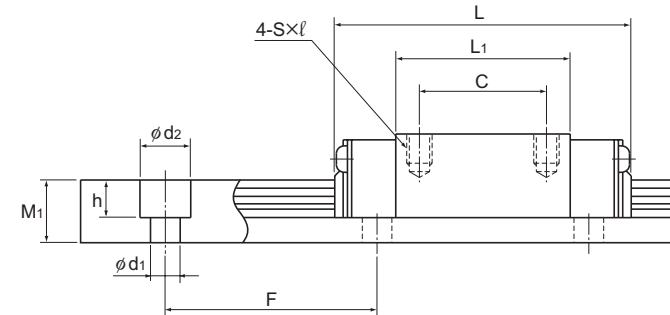
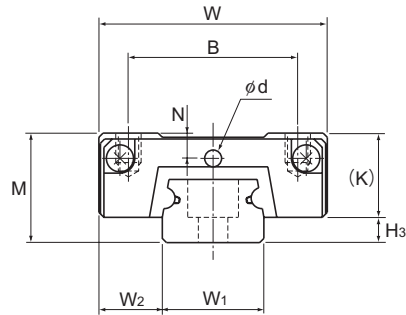
Dimensional Drawing, Dimensional Table	
Models RSH-M, RSH-KM and RSH-VM	B-128
Standard Length and Maximum Length of the LM Rail	
	B-130
Options	B-223
The LM Block Dimension (Dimension L) with LaCS and Seals Attached	B-227
Cap C	B-250

A Technical Descriptions of the Products (Separate)

Technical Descriptions	
Structure and features	A-215
Types and Features	A-215
Rated Loads in All Directions	A-216
Equivalent Load	A-216
Service Life	A-100
Radial Clearance Standard	A-114
Accuracy Standards	A-126
Shoulder Height of the Mounting Base and the Corner Radius	A-332
Error Allowance in the Parallelism between Two Rails	A-334
Error Allowance in Vertical Level between Two Rails	A-337
Accuracy of the Mounting Surface	A-217
Flatness of the Mounting Surface	A-335

* Please see the separate "A Technical Descriptions of the Products".

Models RSH-M, RSH-KM and RSH-VM



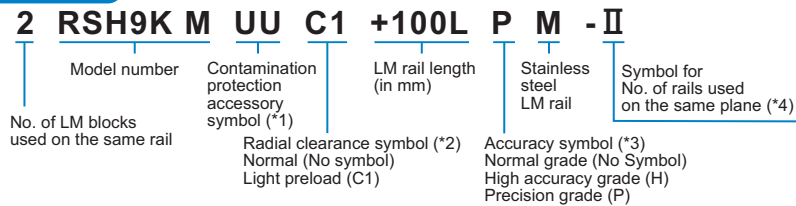
Unit: mm

Model No.	Outer dimensions			LM block dimensions								H ₃	LM rail dimensions					Basic load rating		Static permissible moment N·m*					Mass	
	Height	Width	Length	B	C	S × l	L ₁	K	N	Greasing hole d	Width		Height	Pitch	Length* Max	C	C ₀	M _A		M _B		M _C	LM block kg	LM rail kg/m		
	M	W	L															W ₁	W ₂	M ₁	F				d ₁ × d ₂ × h	1 block
RSH 7M	8	17	23.4	12	8	M2 × 2.5	13.4	6.5	1.7	1.2	1.5	7 ⁰ _{-0.02}	5	4.7	15	2.4 × 4.2 × 2.3	300	0.88	1.37	2.93	20.8	2.93	20.8	5	0.01	0.23
RSH 9KM	10	20	30.8	15	10	M3 × 3	19.8	7.8	2.4	1.5	2.2	9 ⁰ _{-0.02}	5.5	5.5	20	3.5 × 6 × 3.3	1000	1.47	2.25	7.34	43.3	7.34	43.3	10.4	0.018	0.32
RSH 12VM	13	27	35	20	15	M3 × 3.5	20.6	10	3	2	3	12 ⁰ _{-0.025}	7.5	7.5	25	3.5 × 6 × 4.5	1340	2.65	4.02	11.4	74.9	10.1	67.7	19.2	0.037	0.58

Note) Since stainless steel is used in the LM block, LM rail and balls, these models are highly resistant to corrosion and environment.

Note) The maximum length under "Length*" indicates the standard maximum length of an LM rail. (See B-130.)
 Static permissible moment*: 1 block: static permissible moment value with 1 LM block
 Double blocks: static permissible moment value with 2 blocks closely contacting with each other

Model number coding



(*1) See contamination protection accessory on A-368. (*2) See A-114. (*3) See A-126. (*4) See A-59.

Note) This model number indicates that a single-rail unit constitutes one set. (i.e., required number of sets when 2 rails are used in parallel is 2 at a minimum.)

Standard Length and Maximum Length of the LM Rail

Table1 shows the standard lengths and the maximum lengths of model RSH variations.

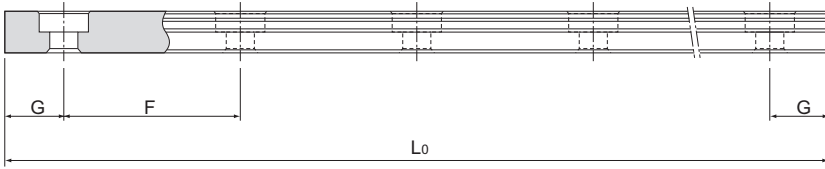


Table1 Standard Length and Maximum Length of the LM Rail for Model RSH

Unit: mm

Model No.	RSH 7	RSH 9	RSH 12
LM rail standard length (L_0)	40	55	70
	55	75	95
	70	95	120
	85	115	145
	100	135	170
	130	155	195
		175	220
		195	245
		275	270
		375	320
Standard pitch F	15	20	25
G	5	7.5	10
Max length	300	1000	1340

Note) The maximum length varies with accuracy grades. Contact THK for details.