

# MX

## LM Guide

### B Product Specifications

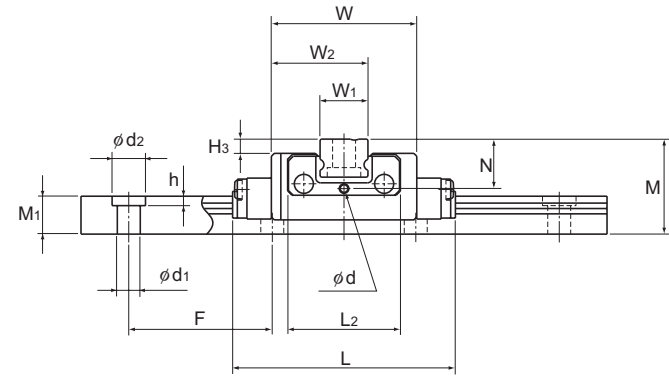
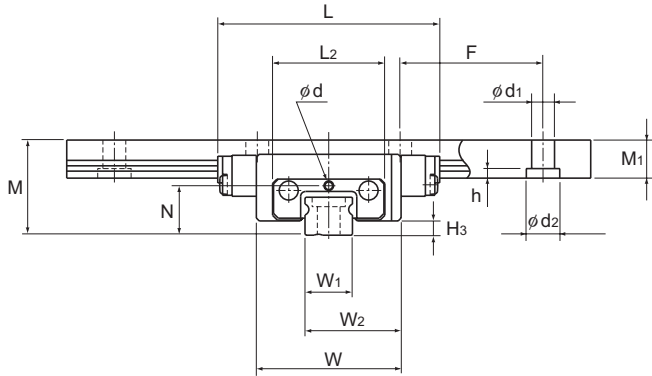
<b>Dimensional Drawing, Dimensional Table</b>	
Model MX .....	B-160
<b>Standard Length and Maximum Length of the LM Rail .....</b>	
	B-162
<b>Options .....</b>	
The LM Block Dimension (Dimension L) with LaCS and Seals Attached .....	B-223
	B-228

### A Technical Descriptions of the Products (Separate)

<b>Technical Descriptions</b>	
Structure and features .....	A-249
Types and Features .....	A-250
Rated Loads in All Directions .....	A-250
Equivalent Load .....	A-250
Service Life .....	A-100
Radial Clearance Standard .....	A-115
Accuracy Standards .....	A-127
Shoulder Height of the Mounting Base and the Corner Radius .....	A-327

\* Please see the separate "A Technical Descriptions of the Products".

# Model MX



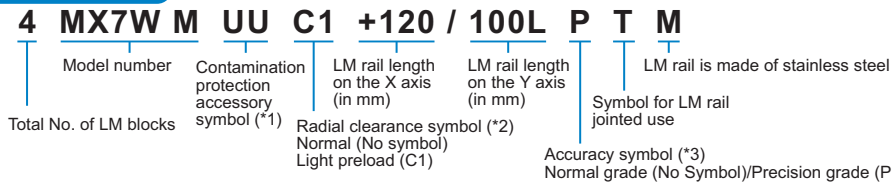
Unit: mm

Model No.	Outer dimensions			LM block dimensions			LM rail dimensions	Basic load rating	Static Permissible Moment* N-m	Mass								
	Height	Width	Length	L <sub>2</sub>	N	Greasing hole d				H <sub>3</sub>	C	C <sub>0</sub>	M <sub>0</sub>	LM block kg	LM rail kg/m			
	M	W	L															
MX 5M	10	15.2	23.3	11.8	5.2	0.8	1.5	5 <sup>0</sup> <sub>-0.02</sub>	10.1	4	15	2.4×3.5×1	200	0.59	1.1	2.57	0.01	0.14
MX 7WM	14.5	30.2	40.8	24.6	7.4	1.2	2	14 <sup>0</sup> <sub>-0.025</sub>	22.1	5.2	30	3.5×6×3.2	400	2.04	3.21	14.7	0.051	0.51

Note) Since stainless steel is used in the LM block, LM rail and balls, these models are highly resistant to corrosion and environment.

Note) The maximum length under "Length\*" indicates the standard maximum length of an LM rail. (See B-162.)  
Static permissible moment\*: static permissible moment value with 1 LM block

### Model number coding

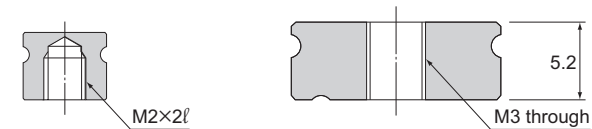


(\*1) See contamination protection accessory on A-368. (\*2) See A-115. (\*3) See A-127.

Note) If the LM rail mount of a semi-standard model is of a tapped-hole LM rail type, add symbol "K" after the accuracy symbol.

Example: 4 MX7W M UU C1+120/100L P K T M  
└─── Add symbol K

For the LM rail mounting hole, a tapped-hole LM rail type is available as semi-standard.



Model MX5M

Model MX7WM

When mounting the LM rail of model MX7WM, take into account the thread length of the mounting bolt in order not to let the bolt end stick out of the top face of the LM rail.

## Standard Length and Maximum Length of the LM Rail

Table1 shows the standard lengths and the maximum lengths of model MX variations.

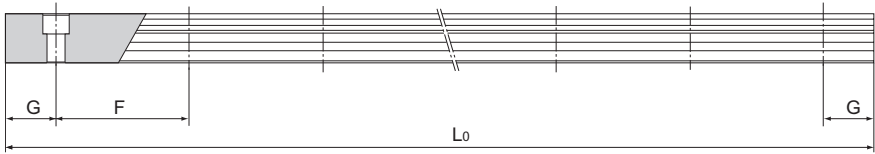


Table1 Standard Length and Maximum Length of the LM Rail for Model MX

Unit: mm

Model No.	MX 5	MX 7W
LM rail standard length ( $L_0$ )	40	50
	55	80
	70	110
	100	140
	130	170
	160	200
		260
Standard pitch F	15	30
G	5	10
Max length	200	400

Note) The maximum length varies with accuracy grades. Contact THK for details.