

HSR-M2

LM Guide

B Product Specifications

Dimensional Drawing, Dimensional Table

Model HSR-M2A B-204

Standard Length and Maximum Length
of the LM Rail.....

B-206

Options..... B-223

The LM Block Dimension (Dimension L)
with LaCS and Seals Attached..... B-229

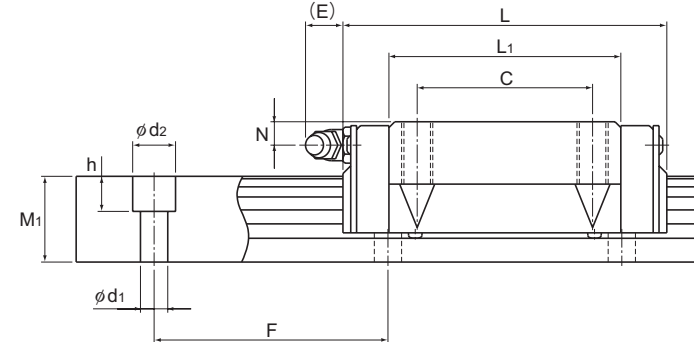
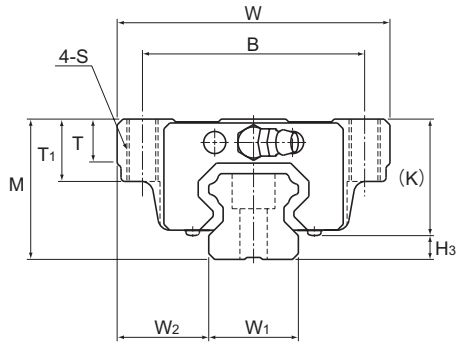
A Technical Descriptions of the Products (Separate)

Technical Descriptions

Structure and features.....	A-293
Types and Features.....	A-293
Rated Loads in All Directions.....	A-293
Equivalent Load.....	A-293
Service Life.....	A-100
Radial Clearance Standard.....	A-115
Accuracy Standards.....	A-119
Shoulder Height of the Mounting Base and the Corner Radius.....	A-328
Error Allowance in the Parallelism between Two Rails.....	A-333
Error Allowance in Vertical Level between Two Rails.....	A-336

* Please see the separate "A Technical Descriptions of the Products".

Model HSR-M2A



Unit: mm

Model No.	Outer dimensions			LM block dimensions										H ₃	LM rail dimensions					Basic load rating		Static permissible moment N-m*					Mass		
	Height	Width	Length	B	C	S	L ₁	T	T ₁	K	N	E	Grease nipple		Width	Height	Pitch	Length*	C	C ₀	M _A		M _B		M _C	LM block	LM rail		
	M	W	L																		1 block	Double blocks	1 block	Double blocks	1 block			kg	kg/m
HSR 15M2A	24	47	56.6	38	30	M5	38.8	6.5	11	19.3	4.3	5.5	PB1021B	3.5	15	16	15	60	4.5×7.5×5.3	1000	2.33	2.03	12.3	70.3	12.3	70.3	10.8	0.2	1.5
HSR 20M2A	30	63	74	53	40	M6	50.8	9.5	10	26	5	12	B-M6F	4	20	21.5	18	60	6×9.5×8.5	1000	3.86	3.57	29	160	29	160	26.5	0.35	2.3
HSR 25M2A	36	70	83.1	57	45	M8	59.5	11	16	30.5	6	12	B-M6F	5.5	23	23.5	22	60	7×11×9	1000	5.57	5.16	46.9	261	46.9	261	45.1	0.59	3.3

Note) For the high corrosion resistance type LM Guide, a stainless steel end plate is optionally available. (symbol···I)

Note) The maximum length under "Length*" indicates the standard maximum length of an LM rail. (See B-206.)
 The basic load rating of the high corrosion resistance type LM Guide is smaller than ordinary stainless steel LM Guides.
 Static permissible moment*: 1 block: static permissible moment value with 1 LM block
 Double blocks: static permissible moment value with 2 blocks closely contacting with each other

Model number coding

HSR20M2 A 2 UU C1 I +820L P T -II

Model number (high corrosion resistance type LM Guide)	Type of LM block	Contamination protection accessory symbol (*1)	End plate is made of stainless steel	LM rail length (in mm)	Symbol for LM rail jointed use	Symbol for No. of rails used on the same plane (*4)
	No. of LM blocks used on the same rail	Radial clearance symbol (*2)	Normal (No symbol) Light preload (C1) Medium preload (C0)		Accuracy symbol (*3)	
					Normal grade (No Symbol)/High accuracy grade (H) Precision grade (P)/Super precision grade (SP) Ultra precision grade (UP)	

(*1) See contamination protection accessory on A-368. (*2) See A-115. (*3) See A-119. (*4) See A-59.

Note) This model number indicates that a single-rail unit constitutes one set. (i.e., required number of sets when 2 rails are used in parallel is 2 at a minimum.)

Standard Length and Maximum Length of the LM Rail

Table1 shows the standard lengths and the maximum lengths of model HSR-M2 variations. If the maximum length of the desired LM rail exceeds them, jointed rails will be used. Contact THK for details.

For the G dimension when a special length is required, we recommend selecting the corresponding G value from the table. The longer the G dimension is, the less stable the G area may become after installation, thus causing an adverse impact to accuracy.

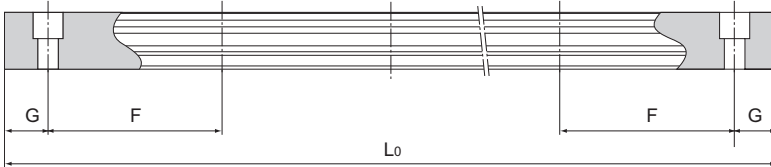


Table1 Standard Length and Maximum Length of the LM Rail for Model HSR-M2

Unit: mm

Model No.	HSR 15M2	HSR 20M2	HSR 25M2
LM rail standard length (L_0)	160	280	280
	280	460	460
	460	640	640
	640	820	820
	1000	1000	1000
Standard pitch F	60	60	60
G	20	20	20
Max length	1000	1000	1000

Note1) The maximum length varies with accuracy grades. Contact THK for details.

Note2) If jointed rails are not allowed and a greater length than the maximum values above is required, contact THK.