

GSR-R

LM Guide

B Product Specifications

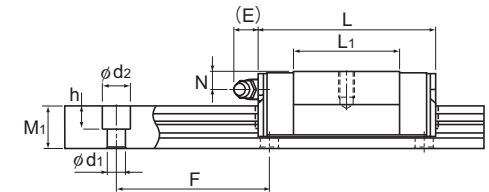
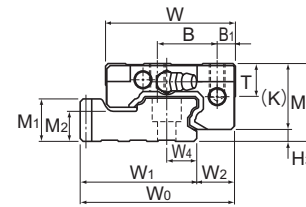
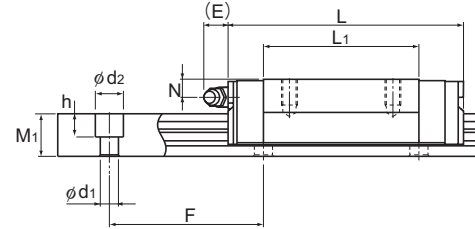
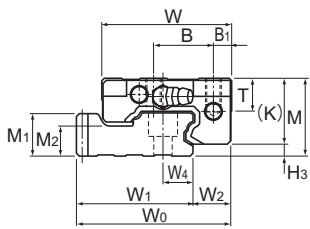
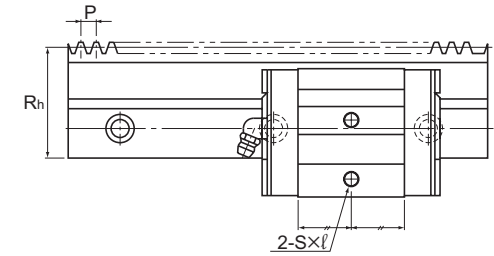
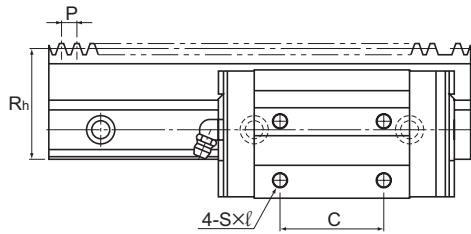
Dimensional Drawing, Dimensional Table	
Model GSR-R.....	B-150
Standard Length of the LM Rail	B-152
Options.....	
The LM Block Dimension (Dimension L)	B-223
with LaCS and Seals Attached	B-228

A Technical Descriptions of the Products (Separate)

Technical Descriptions	
Structure and features.....	A-237
Types and Features	A-238
Rated Loads in All Directions	A-238
Equivalent Load	A-239
Service Life	A-100
Accuracy Standards	A-125
Shoulder Height of the Mounting Base and the Corner Radius	A-331
Error Allowance in the Parallelism between Two Rails	A-334
Error Allowance in Vertical Level between Two Rails	A-337
Rack and Pinion	A-240

* Please see the separate "A Technical

Model GSR-R



Model GSR-T-R

Model GSR25V-R

Unit: mm

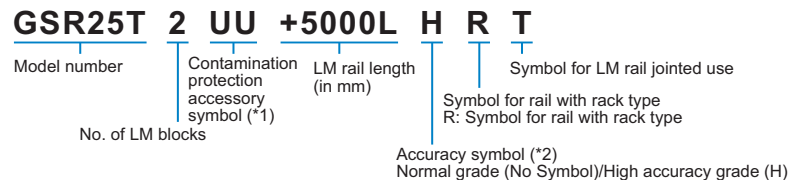
Model No.	Rack			Outer dimensions				LM block dimensions									H ₃	LM rail dimensions							Basic loading rating		Static permissible moment N-m*				Mass		
	Reference pitch dimension	Module	Pitch line height	Height	Width	Length	B ₁	B	C	S×ℓ	L ₁	T	K	N	E	Grease nipple		Width	Height	Pitch	C	C ₀	M _A		M _B		LM block	LM rail					
	P	Rh	M	W	W ₀	L																	W ₁	W ₂	W ₄	M ₁			F	M ₂	d ₁ ×d ₂ ×h	kN	kN
GSR 25T-R GSR 25V-R	6	1.91	43	30	50	59.91	88 69	7	23	40 —	M6×10	60.2 41.2	12.7	25.5	7	12	B-M6F	4.5	44.91	15	11.5	16.5	60	11.5	7×11×9	13.5 10.29	19 12.65	0.177 0.0858	0.965 0.522	0.152 0.0742	0.831 0.451	0.5 0.29	4.7
GSR 30T-R	8	2.55	48	33	57	67.05	103	8	26	45	M8×12	70.3	14.6	28.5	7	12	B-M6F	4.5	50.55	16.5	14	19	80	12	9×14×12	18.8	25.9	0.282	1.54	0.243	1.32	0.6	5.9
GSR 35T-R	10	3.18	57	38	68	80.18	117	9	32	50	M8×15	80.3	15.6	32.5	8	12	B-M6F	5.5	60.18	20	17	22	80	14.5	11×17.5×14	25.1	33.8	0.421	2.28	0.362	1.96	1	8.1

Note) A special type with a module pitch is also available. Contact THK for details.
For checking the pinion strength, see A-241.

Note) A moment in the direction M_c can be received if two rails are used in parallel. However, since it depends on the distance between the two rails, the moment in the direction M_c is omitted here.
The maximum length under "Length*" indicates the standard maximum length of an LM rail. (See B-152.)
Static permissible moment*: 1 block: static permissible moment value with 1 LM block
Double blocks: static permissible moment value with 2 blocks closely contacting with each other

Model number coding

Single-rail LM Guide



(*1) See contamination protection accessory on A-368. (*2) See A-125.

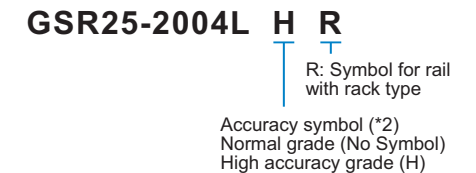
Note) This model number indicates that a single-rail unit constitutes one set.

Model number coding

LM block



Rail with rack



(*1) See contamination protection accessory on A-368. (*2) See A-125.

Standard Length of the LM Rail

Table1 shows the standard LM rail lengths of model GSR-R variations.

Since both end faces of the LM rail of model GSR-R are machined, it can be joined with another rail without additional machining.

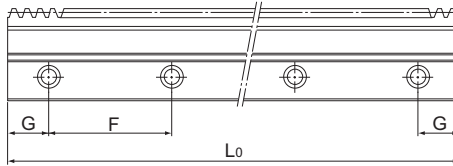


Table1 Standard Length of the LM Rail for Model GSR-R

Unit: mm

Model No.	GSR 25-R		GSR 30-R		GSR 35-R	
	LM rail Standard length (L ₀)	Standard pitch F	G	LM rail Standard length (L ₀)	Standard pitch F	G
	1500	60	30	2004	60	42
				1504	80	32
				2000	80	40
				1500	80	30
				2000	80	40