

# Standard-Stock Precision Ball Screw Unfinished Shaft Ends Models BIF, BNFN, MDK, MBF and BNF

## Ball Screw

### B Product Specifications

**Dimensional Drawing, Dimensional Table**  
 Unfinished Shaft Ends..... B-584  
 |  
 B-604

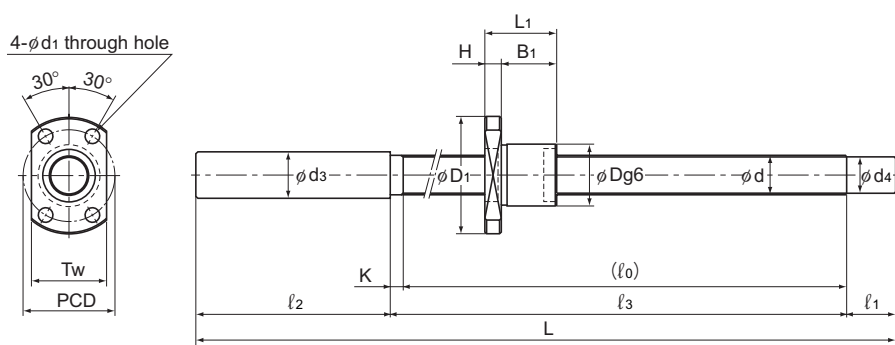
**Options**  
 Dimensions of the Ball Screw Nut Attached  
 with Wiper Ring W and QZ Lubricator ..... B-778

### A Technical Descriptions of the Products (Separate)

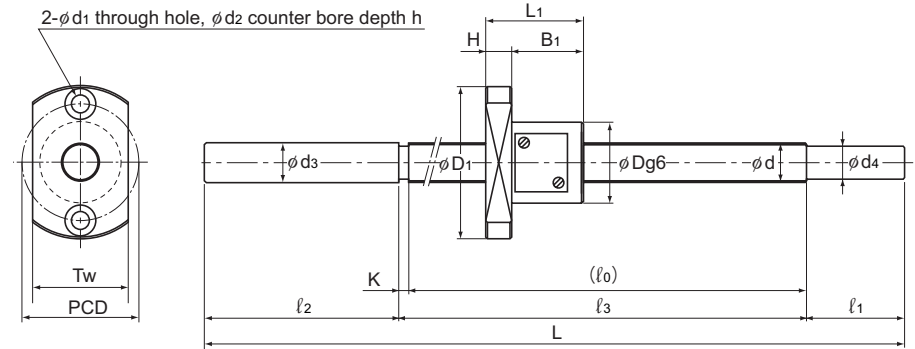
Technical Descriptions	
Structure and features.....	A-755
Types and Features .....	A-756
Service Life .....	A-704
Nut Types and Axial Clearance.....	A-758

\* Please see the separate "A Technical Descriptions of the Products".

# Unfinished Shaft Ends



Model MDK



Model MBF

Unit: mm

Model No.	Ball screw specifications							Nut					Dimensions										Standard-stock symbol	Overall length L	Nut mass kg	Shaft mass kg/m			
	Screw shaft outer diameter d	Lead Ph	Ball center-to-center diameter dp	Thread minor diameter dc	No. of loaded circuits Rows x turns	Basic load rating		Outer diameter D	Flange diameter D1	Overall length L1	Nut height H	Bore diameter B1	PCD	d1	d2	h	Tw	l0	l1	l2	l3	d3					d4	K	
						Ca kN	C0a kN																						
MDK 0401-3	4	1	4.15	3.4	3×1	0.29	0.42	9	19	13	3	10	14	2.9	—	—	13	A	95	47	10	35	50	6.2	3.2	3	0.01	0.07	
																				115	67	10	35	70	6.2	3.2	3	0.01	0.07
																				145	97	10	35	100	6.2	3.2	3	0.01	0.07
MBF 0401-3.7	4	1	4.15	3.2	1×3.7	0.59	0.93	11	24	18	4	14	17	3.4	6.5	2.5	13	A	90	48	10	30	50	4.3	3.2	2	0.02	0.07	
																			110	68	10	30	70	4.3	3.2	2	0.02	0.07	
																			130	88	10	30	90	4.3	3.2	2	0.02	0.07	
MDK 0601-3	6	1	6.2	5.3	3×1	0.54	1	11	23	14.5	3.5	11	17	3.4	—	—	15	A	120	67	10	40	70	8.2	5.3	3	0.02	0.14	
																			150	97	10	40	100	8.2	5.3	3	0.02	0.14	
																			180	127	10	40	130	8.2	5.3	3	0.02	0.14	
MBF 0601-3.7	6	1	6.15	5.2	1×3.7	0.74	1.5	13	30	21	5	16	21.5	3.4	6.5	3	17	A	131	58	20	50	61	6.3	5.2	3	0.04	0.14	
																			161	88	20	50	91	6.3	5.2	3	0.04	0.14	
																			201	128	20	50	131	6.3	5.2	3	0.04	0.14	

Note) Models MDK/MBF 0401 and 0601 are not provided with a labyrinth seal.

## Model number coding

**MDK0401-3 GT +95L C5 A**

Model number

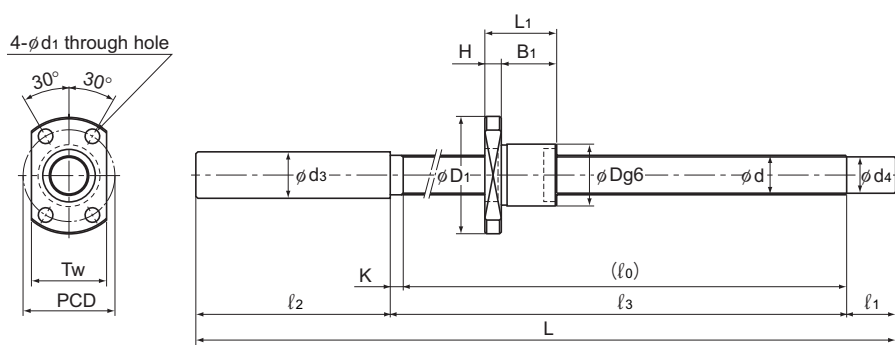
Overall screw shaft length (in mm)

Symbol for standard-stock type (A: with unfinished shaft ends)

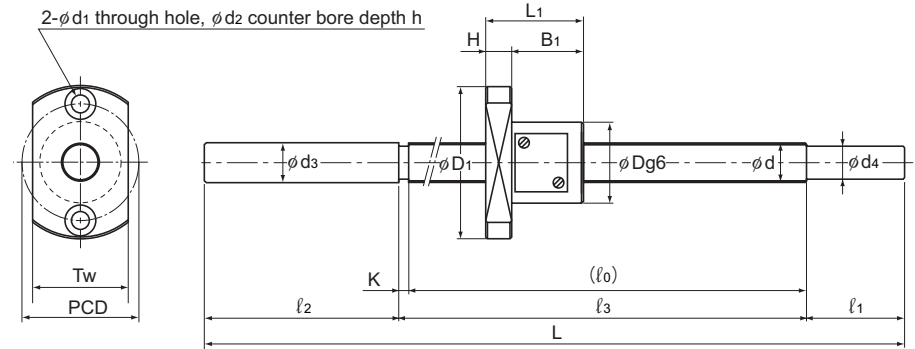
Symbol for clearance in the axial direction (\*1) Accuracy symbol (\*2)

(\*1) See A-685. (\*2) See A-678.

# Unfinished Shaft Ends



Model MDK



Model MBF

Unit: mm

Model No.	Ball screw specifications						Nut					Dimensions							Screw shaft dimensions				Nut mass kg	Shaft mass kg/m					
	Screw shaft outer diameter	Lead	Ball center-to-center diameter	Thread minor diameter	No. of loaded circuits	Basic load rating		Outer diameter	Flange diameter	Overall length	H	B <sub>1</sub>	PCD	d <sub>1</sub>	d <sub>2</sub>	h	Tw	Standard-stock symbol	Overall length	L	l <sub>0</sub>	l <sub>1</sub>			l <sub>2</sub>	l <sub>3</sub>	d <sub>3</sub>	d <sub>4</sub>	K
						Ca kN	C <sub>0a</sub> kN																						
MDK 0801-3	8	1	8.2	7.3	3×1	0.64	1.4	13	26	15	4	11	20	3.4	—	—	17	A	130	67	15	45	70	10.2	7.3	3	0.02	0.29	
																			160	97	15	45	100	10.2	7.3	3	0.02	0.29	
																			190	127	15	45	130	10.2	7.3	3	0.02	0.29	
																			240	177	15	45	180	10.2	7.3	3	0.02	0.29	
MDK 0802-3	8	2	8.3	7	3×1	1.4	2.3	15	28	22	5	17	22	3.4	—	—	19	A	140	76	15	45	80	10.2	7	4	0.04	0.27	
																			170	106	15	45	110	10.2	7	4	0.04	0.27	
																			200	136	15	45	140	10.2	7	4	0.04	0.27	
																			250	186	15	45	190	10.2	7	4	0.04	0.27	
MBF 0802-3.7	8	2	8.3	6.4	1×3.7	2.5	4.2	20	40	28	6	22	30	4.5	8	4	24	A	168	85	25	55	88	8.3	6.2	3	0.1	0.19	
																			193	110	25	55	113	8.3	6.2	3	0.1	0.19	
																			218	135	25	55	138	8.3	6.2	3	0.1	0.19	

Note) Model MDK 0801 is not provided with a labyrinth seal.

### Model number coding

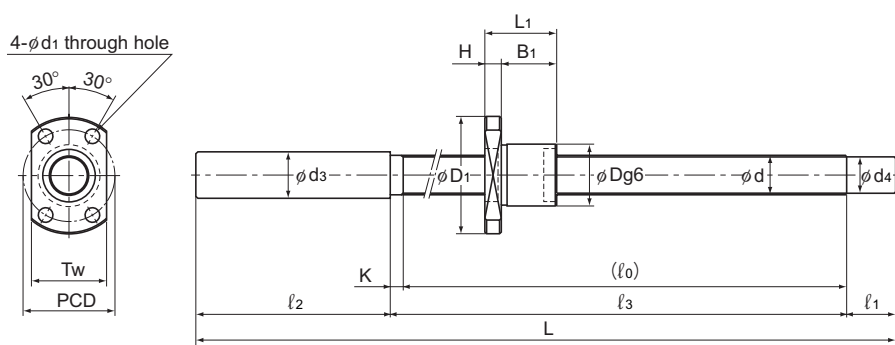
**MBF0802-3.7 RR GT +218L C5 A**

Model number    Seal symbol (\*1)    Overall screw shaft length (in mm)    Symbol for standard-stock type (A: with unfinished shaft ends)

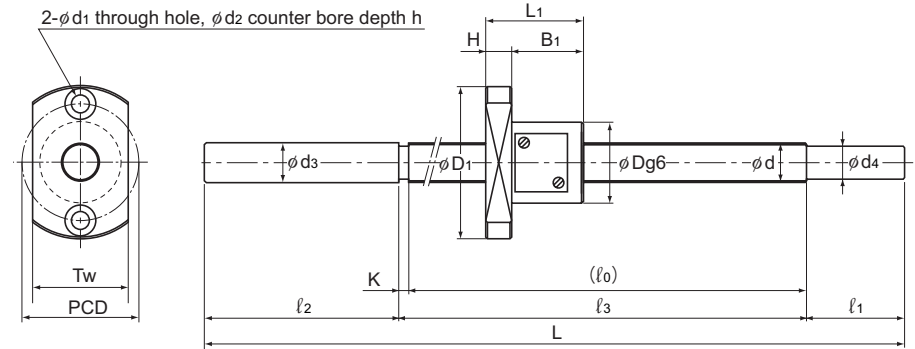
Symbol for clearance in the axial direction (\*2)    Accuracy symbol (\*3)

(\*1) See A-816. (\*2) See A-685. (\*3) See A-678.

# Unfinished Shaft Ends



Model MDK



Model MBF

Unit: mm

Model No.	Ball screw specifications						Nut					Dimensions							Screw shaft dimensions				Nut mass kg	Shaft mass kg/m				
	Screw shaft outer diameter d	Lead Ph	Ball center-to-center diameter dp	Thread minor diameter dc	No. of loaded circuits Rows x turns	Basic load rating		Outer diameter D	Flange diameter D1	Overall length L1	H	B1	PCD	d1	d2	h	Tw	Standard-stock symbol	Overall length L	l0	l1	l2			l3	d3	d4	K
						Ca kN	C0a kN																					
MDK 1002-3	10	2	10.3	9	3×1	1.5	2.9	17	34	22	5	17	26	4.5	—	—	21	A	160	86	15	55	90	12.2	9	4	0.05	0.47
																			210	136	15	55	140	12.2	9	4	0.05	0.47
																			260	186	15	55	190	12.2	9	4	0.05	0.47
																			310	236	15	55	240	12.2	9	4	0.05	0.47
MBF 1002-3.7	10	2	10.3	8.6	1×3.7	2.8	5.3	23	43	28	6	22	33	4.5	8	4	27	A	183	95	25	60	98	10.3	8.2	3	0.11	0.36
																			223	135	25	60	138	10.3	8.2	3	0.11	0.36
																			273	185	25	60	188	10.3	8.2	3	0.11	0.36
MDK 1202-3	12	2	12.3	11	3×1	1.7	3.6	19	36	22	5	17	28	4.5	—	—	23	A	165	86	15	60	90	14.2	11	4	0.05	0.71
																			215	136	15	60	140	14.2	11	4	0.05	0.71
																			265	186	15	60	190	14.2	11	4	0.05	0.71
																			315	236	15	60	240	14.2	11	4	0.05	0.71
																			365	286	15	60	290	14.2	11	4	0.05	0.71
MBF 1202-3.7	12	2	12.3	10.6	1×3.7	3	6.5	25	47	30	8	22	36	5.5	9.5	5.5	29	A	210	117	30	60	120	12.3	10.2	3	0.15	0.58
																			235	142	30	60	145	12.3	10.2	3	0.15	0.58
																			285	192	30	60	195	12.3	10.2	3	0.15	0.58

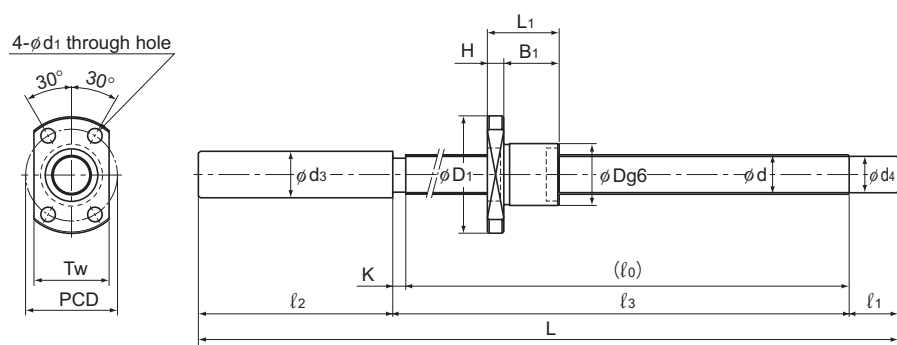
Model number coding

**MDK1202-3 RR GT +165L C5 A**

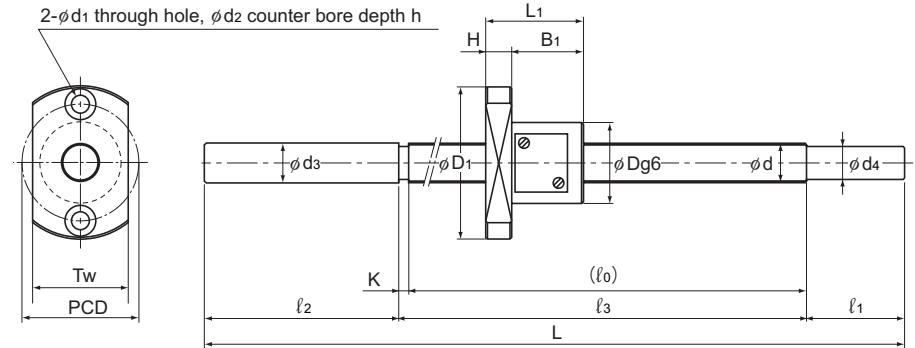
Model number Seal symbol (\*1) Overall screw shaft length (in mm) Symbol for standard-stock type (A: with unfinished shaft ends)  
 Symbol for clearance in the axial direction (\*2) Accuracy symbol (\*3)

(\*1) See A-816. (\*2) See A-685. (\*3) See A-678.

# Unfinished Shaft Ends



Model MDK



Model MBF

Unit: mm

Model No.	Ball screw specifications						Nut					Dimensions							Screw shaft dimensions				Nut mass kg	Shaft mass kg/m				
	Screw shaft outer diameter d	Lead Ph	Ball center-to-center diameter dp	Thread minor diameter dc	No. of loaded circuits Rows x turns	Basic load rating		Outer diameter D	Flange diameter D <sub>1</sub>	Overall length L <sub>1</sub>	H	B <sub>1</sub>	PCD	d <sub>1</sub>	d <sub>2</sub>	h	Tw	Standard-stock symbol	Overall length L	L <sub>0</sub>	L <sub>1</sub>	L <sub>2</sub>			L <sub>3</sub>	d <sub>3</sub>	d <sub>4</sub>	K
						Ca kN	C <sub>0a</sub> kN																					
MDK 1402-3	14	2	14.3	13	3×1	1.8	4.3	21	40	23	6	17	31	5.5	—	—	26	A	175	86	25	60	90	15.2	13	4	0.07	1.0
																			225	136	25	60	140	15.2	13	4	0.07	1.0
																			275	186	25	60	190	15.2	13	4	0.07	1.0
																			325	236	25	60	240	15.2	13	4	0.07	1.0
																			425	336	25	60	340	15.2	13	4	0.07	1.0
MBF 1402-3.7	14	2	14.3	12.5	1×3.7	3.3	7.5	26	48	30	8	22	37	5.5	9.5	5.5	32	A	205	102	40	60	105	14.3	12.2	3	0.16	0.85
																			245	142	40	60	145	14.3	12.2	3	0.16	0.85
																			295	192	40	60	195	14.3	12.2	3	0.16	0.85
																			345	242	40	60	245	14.3	12.2	3	0.16	0.85

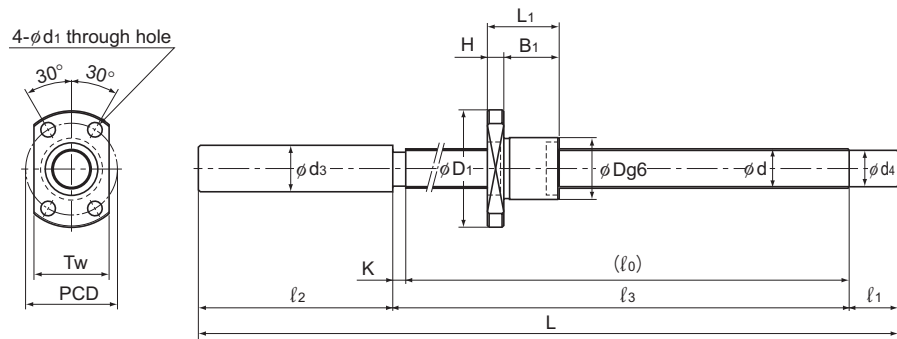
Model number coding

**MBF1402-3.7 RR GT +245L C3 A**

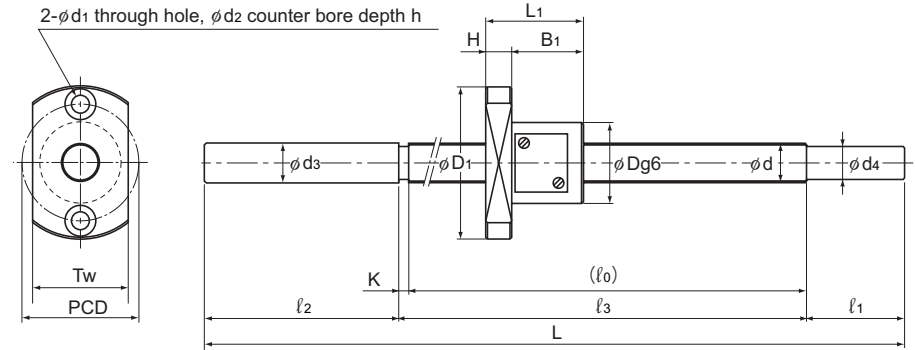
Model number    Seal symbol (\*1)    Overall screw shaft length (in mm)    Symbol for standard-stock type (A: with unfinished shaft ends)  
 Symbol for clearance in the axial direction (\*2)    Accuracy symbol (\*3)

(\*1) See A-816. (\*2) See A-685. (\*3) See A-678.

# Unfinished Shaft Ends



Model MDK



Model MBF

Unit: mm

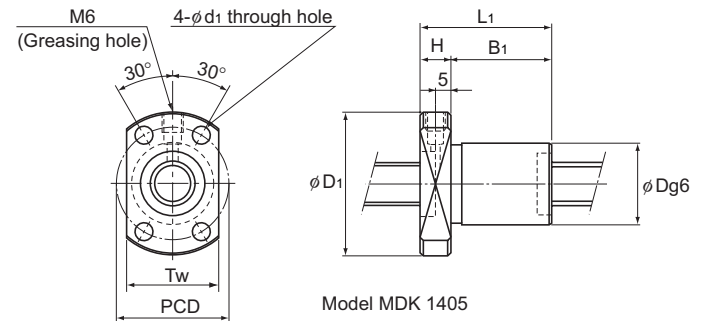
Model No.	Ball screw specifications						Nut					Dimensions							Screw shaft dimensions					Nut mass kg	Shaft mass kg/m			
	Screw shaft outer diameter d	Lead Ph	Ball center-to-center diameter dp	Thread minor diameter dc	No. of loaded circuits Rows x turns	Basic load rating		Outer diameter D	Flange diameter D1	Overall length L1	H	B1	PCD	d1	d2	h	Tw	Standard-stock symbol	Overall length							K		
						Ca kN	C0a kN												L	l0	l1	l2	l3				d3	d4
MDK 1404-3	14	4	14.65	11.9	3×1	4.2	7.6	26	45	33	6	27	36	5.5	—	—	28	A	240	150	25	60	155	15.2	11.9	5	0.14	0.8
																			290	200	25	60	205	15.2	11.9	5	0.14	0.8
																			340	250	25	60	255	15.2	11.9	5	0.14	0.8
																			440	350	25	60	355	15.2	11.9	5	0.14	0.8
																			540	450	25	60	455	15.2	11.9	5	0.14	0.8
MBF 1404-3.7	14	4	14.3	11.8	1×3.7	5.7	11.1	30	54	38	8	30	42	5.5	9.5	5.5	34	A	233	129	40	60	133	14.3	11.2	4	0.25	1.2
																			293	189	40	60	193	14.3	11.2	4	0.25	1.2
																			353	249	40	60	253	14.3	11.2	4	0.25	1.2
																			413	309	40	60	313	14.3	11.2	4	0.25	1.2
MDK 1405-3	14	5	14.75	11.2	3×1	7	11.6	26	45	42	10	32	36	5.5	—	—	28	A	250	160	25	60	165	14	11.2	5	0.19	1.2
																			300	210	25	60	215	14	11.2	5	0.19	1.2
																			350	260	25	60	265	14	11.2	5	0.19	1.2
																			450	360	25	60	365	14	11.2	5	0.19	1.2
																			550	460	25	60	465	14	11.2	5	0.19	1.2

Model number coding

**MDK1404-3 RR G2 +240L C7 A**

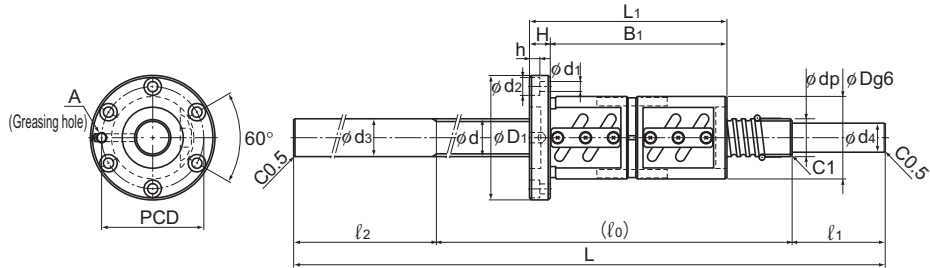
Model number Seal symbol (\*1) Overall screw shaft length (in mm) Symbol for standard-stock type (A: with unfinished shaft ends)  
 Symbol for clearance in the axial direction (\*2) Accuracy symbol (\*3)

(\*1) See A-816. (\*2) See A-685. (\*3) See A-678.

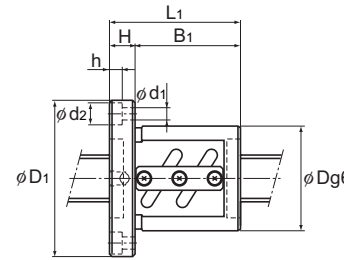


Model MDK 1405

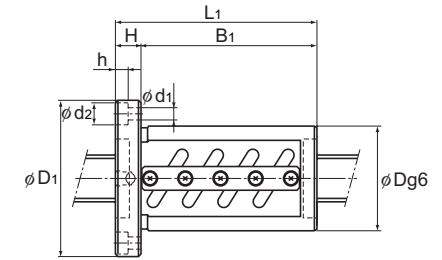
# Unfinished Shaft Ends



Model BNFN



Model BNF



Model BIF

Unit: mm

Model No.	Ball screw specifications							Nut		Dimensions										Screw shaft dimensions						Shaft mass kg/m		
	Screw shaft outer diameter d	Lead Ph	Ball center-to-center diameter dp	Thread minor diameter dc	No. of loaded circuits Rows x turns	Basic load rating		Applied preload N	Outer diameter D	Flange diameter D1	Overall length L1	Mass kg	H	B1	PCD	d1	d2	h	Greasing hole A	Standard-stock symbol	Overall length							
						Ca kN	Coa kN														L	l0	l1	l2	d3		d4	
BNFN 1605-2.5 BNF 1605-2.5 BIF 1605-5	16	5	16.75	13.2	1×2.5	7.4	13.9	390 — 390	40	60	76 41 56	0.6 0.37 0.48	10	66 31 46	50	4.5	8	4.5	M6	A	410	200	50	160	16	12.8	0.92	
BNFN 1810-2.5 BNF 1810-2.5 BIF 1810-3	18	10	18.8	15.5	1×2.5 1×2.5 1×1.5	7.8 7.8 5.1	15.9 15.9 9.6	390 — 250	42	65	119 69 75	1.0 0.67 0.75	12	107 57 63	53	5.5	9.5	5.5	M6	A	410	200	50	160	18	15.3	1.62	
BNFN 2005-5 BNF 2005-5 BIF 2005-5	20	5	20.75	17.2	2×2.5 2×2.5 1×2.5	15.1 15.1 8.3	35 35 17.4	740 — 440	44	67	106 56 56	0.9 0.57 0.57	11	95 45 45	55	5.5	9.5	5.5	M6	A	410	200	50	160	20	15.3	1.65	
																					B	610	300	50	260	20	16.8	1.65
																						710	400	50	260	20	16.8	1.65

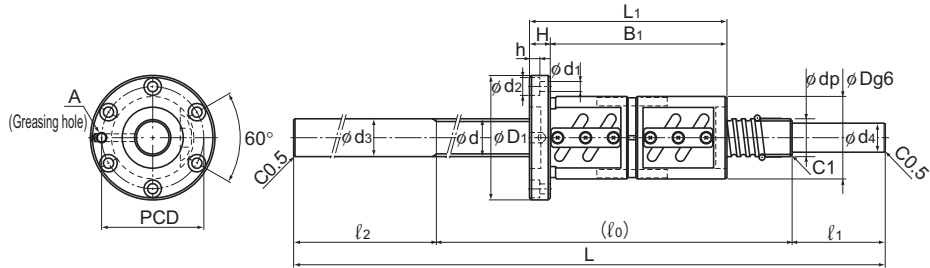
Model number coding

**BNFN2005-5 RR G0 +610L C5 A**

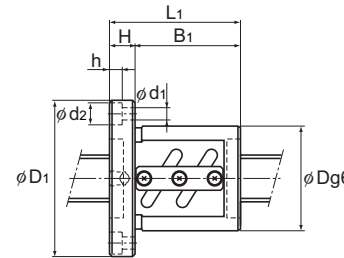
Model number    Seal symbol (\*1)    Overall screw shaft length (in mm)    Symbol for standard-stock type (symbol A or B)  
 Symbol for clearance in the axial direction (\*2)    Accuracy symbol (\*3)

(\*1) See A-816. (\*2) See A-685. (\*3) See A-678.

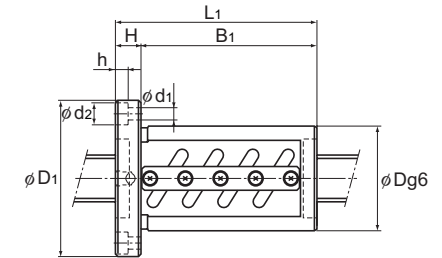
# Unfinished Shaft Ends



Model BNFN



Model BNF



Model BIF

Unit: mm

Model No.	Ball screw specifications							Nut			Dimensions							Screw shaft dimensions							Shaft mass kg/m		
	Screw shaft outer diameter d	Lead Ph	Ball center-to-center diameter dp	Thread minor diameter dc	No. of loaded circuits Rows x turns	Basic load rating		Applied preload N	Outer diameter D	Flange diameter D1	Overall length L1	Mass kg	H	B1	PCD	d1	d2	h	Greasing hole A	Standard-stock symbol	Overall length L	l0	l1	l2		d3	d4
						Ca kN	C0a kN																				
BNFN 2505-5 BNF 2505-5 BIF 2505-5	25	5	25.75	22.2	2×2.5 1×2.5	16.7 9.2	44 22	830 440	50	73	105 55 55	1.2 0.75 0.75	11	94 44 44	61	5.5	9.5	5.5	M6	A	520	300	60	160	25	20.3	2.84
																					620	400	60	160	25	20.3	2.84
																					720	500	60	160	25	20.3	2.84
																					820	600	60	160	25	20.3	2.84
																					1020	800	60	160	25	21.8	2.84
																					1220	1000	60	160	25	21.8	2.84
																					1420	1200	60	160	25	21.8	2.84
BNFN 2510A-2.5 BNF 2510A-2.5 BIF 2510A-5	25	10	26.3	21.4	1×2.5	15.8	33	780 780	58	85	120 70 100	2.0 1.43 1.87	18	102 52 82	71	6.6	11	6.5	M6	A	720	400	60	260	25	21.8	2.84
																					820	500	60	260	25	21.8	2.84
																					620	400	60	160	25	20.3	2.68
																					820	600	60	160	25	20.3	2.68
																					1020	800	60	160	25	20.3	2.68
																					1220	1000	60	160	25	20.3	2.68
																					1420	1200	60	160	25	20.3	2.68

## Model number coding

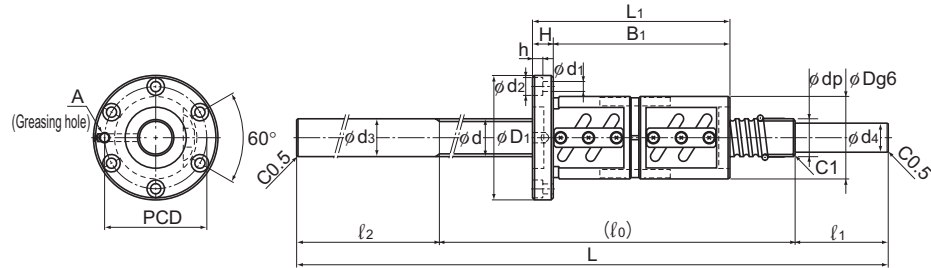
**BIF2505-5 RR G0 +720L C5 B**

Model number    Seal symbol (\*1)    Overall screw shaft length (in mm)    Symbol for standard-stock type (symbol A or B)  
 Symbol for clearance in the axial direction (\*2)    Accuracy symbol (\*3)

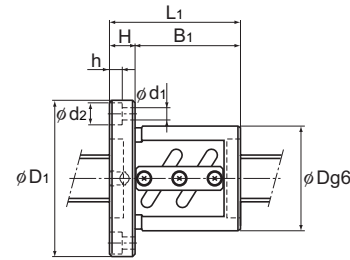
(\*1) See A-816. (\*2) See A-685. (\*3) See A-678.



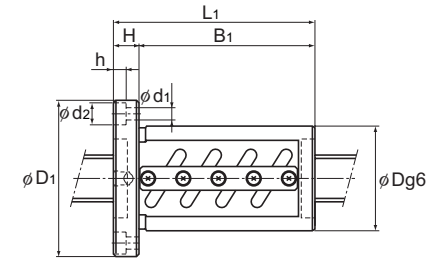
# Unfinished Shaft Ends



Model BNFN



Model BNF



Model BIF

Unit: mm

Model No.	Ball screw specifications							Nut			Dimensions							Screw shaft dimensions							Shaft mass kg/m		
	Screw shaft outer diameter d	Lead Ph	Ball center-to-center diameter dp	Thread minor diameter dc	No. of loaded circuits Rows x turns	Basic load rating		Applied preload N	Outer diameter D	Flange diameter D1	Overall length L1	Mass kg	H	B1	PCD	d1	d2	h	Greasing hole A	Standard-stock symbol	Overall length L	l0	l1	l2		d3	d4
						Ca kN	Coa kN																				
BNFN 2806-5 BNF 2806-5 BIF 2806-5 BIF 2806-10	28	6	28.75	25.2	2×2.5 2×2.5 1×2.5 2×2.5	17.5 17.5 9.6 17.5	49.4 49.4 24.6 49.4	880 — 490 880	55	85	122 68 68 104	1.7 1.13 1.0 1.57	12	110 56 56 92	69	6.6	11	6.5	M6	A	520	300	60	160	28	20.3	3.89
																				B	720	400	70	250	28	24.8	3.89
																					920	500	70	350	28	24.8	3.89
																					1100	700	70	330	28	24.8	3.89
BNFN 3205-5 BNF 3205-5 BIF 3205-5 BIF 3205-10	32	5	32.75	29.2	2×2.5 2×2.5 1×2.5 2×2.5	18.5 18.5 10.2 18.5	56.4 56.4 28.1 56.4	930 — 490 930	58	85	106 56 56 86	1.54 0.93 0.87 1.32	12	94 44 44 74	71	6.6	11	6.5	M6	A	730	500	70	160	32	25.3	5.03
																					930	700	70	160	32	25.3	5.03
																					1230	1000	70	160	32	25.3	5.03
																					1430	1200	70	160	32	25.3	5.03
																					1630	1400	70	160	32	27.8	5.03
																					1830	1600	70	160	32	27.8	5.03

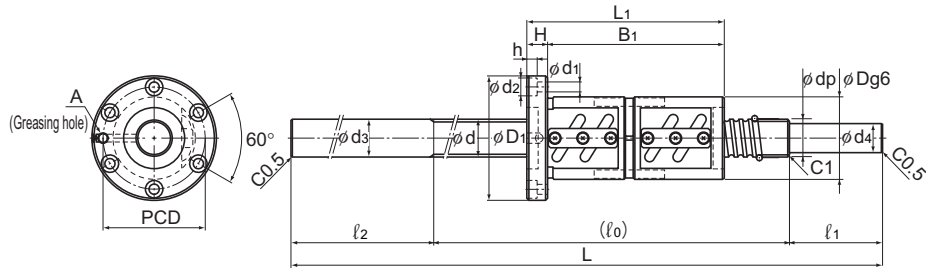
Model number coding

**BNFN2806-5 RR G0 +1020L C5 A**

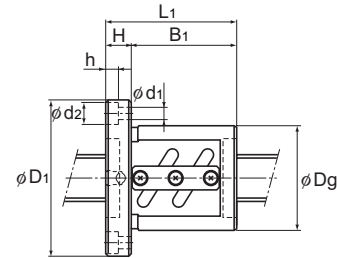
Model number    Seal symbol (\*1)    Overall screw shaft length (in mm)    Symbol for standard-stock type (symbol A or B)  
 Symbol for clearance in the axial direction (\*2)    Accuracy symbol (\*3)

(\*1) See A-816. (\*2) See A-685. (\*3) See A-678.

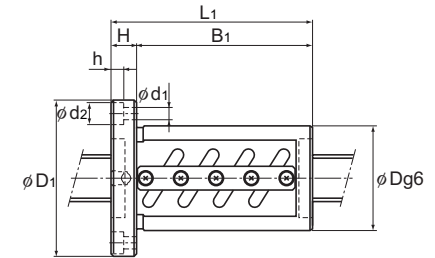
# Unfinished Shaft Ends



Model BNFN



Model BNF



Model BIF

Unit: mm

Model No.	Ball screw specifications							Nut			Dimensions							Screw shaft dimensions							Shaft mass kg/m		
	Screw shaft outer diameter d	Lead Ph	Ball center-to-center diameter dp	Thread minor diameter dc	No. of loaded circuits Rows x turns	Basic load rating		Applied preload N	Outer diameter D	Flange diameter D1	Overall length L1	Mass kg	H	B1	PCD	d1	d2	h	Greasing hole A	Standard-stock symbol	Overall length		d3	d4			
						Ca kN	Coa kN														L	l0				l1	l2
BNFN 3206-5 BNF 3206-5 BIF 3206-5 BIF 3206-10	32	6	33	28.4	2×2.5 2×2.5 1×2.5 2×2.5	25.2 25.2 13.9 25.2	70.4 70.4 35.2 70.4	1270 — 690 1270	62	89	123 63 63 99	2.0 1.2 1.2 1.76	12	111 51 51 87	75	6.6	11	6.5	M6	A	730 930 1230 1430 1630 1830	500 700 1000 1200 1400 1600	70 70 70 70 70 70	160 160 160 160 160 160	32 32 32 32 32 32	25.3 25.3 25.3 27.8 27.8 27.8	4.63 4.63 4.63 4.63 4.63 4.63
BNFN 3210A-5 BNF 3210A-5 BIF 3210A-5	32	10	33.7 5	26.4	2×2.5 2×2.5 1×2.5	47.2 47.2 26.1	112.7 112.7 56.2	2350 — 1270	74	108	190 100 100	5.5 2.8 2.8	15	175 85 85	90	9	14	8.5	M6	A	730 930 1430 1830	500 700 1200 1600	70 70 70 70	160 160 160 160	32 32 32 32	25.3 25.3 25.3 25.3	3.66 3.66 3.66 3.66

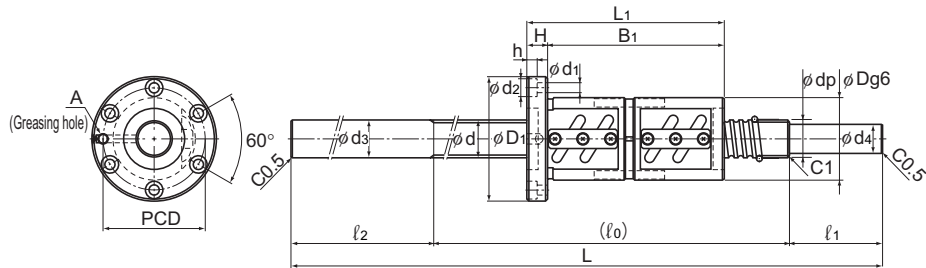
Model number coding

**BNFN3206-5 RR G0 +1100L C5 B**

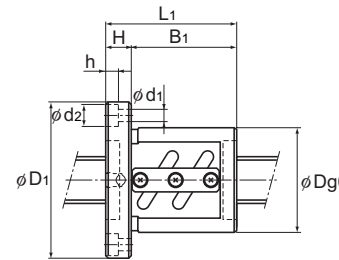
Model number    Seal symbol (\*1)    Overall screw shaft length (in mm)    Symbol for standard-stock type (symbol A or B)  
 Symbol for clearance in the axial direction (\*2)    Accuracy symbol (\*3)

(\*1) See A-816. (\*2) See A-685. (\*3) See A-678.

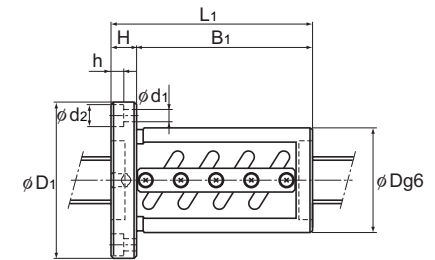
# Unfinished Shaft Ends



Model BNFN



Model BNF



Model BIF

Unit: mm

Model No.	Ball screw specifications							Nut		Dimensions							Screw shaft dimensions							Shaft mass kg/m			
	Screw shaft outer diameter d	Lead Ph	Ball center-to-center diameter dp	Thread minor diameter dc	No. of loaded circuits Rows x turns	Basic load rating		Applied preload N	Outer diameter D	Flange diameter D1	Overall length L1	Mass kg	H	B1	PCD	d1	d2	h	Greasing hole A	Standard-stock symbol	Overall length		d3		d4		
						Ca kN	Coa kN														L	l0				l1	l2
BNFN 3610-5 BNF 3610-5 BIF 3610-5 BIF 3610-10	36	10	37.75	30.5	2×2.5 2×2.5 1×2.5 2×2.5	50.1 50.1 27.6 50.1	126.4 126.4 63.3 126.4	2500 — 1370 2500	75	120	201 111 111 171	6.0 3.4 3.4 4.8	18	183 93 93 153	98	11	17.5	11	M6	A	730 930 1430 1830	500 700 1200 1600	70 70 70 70	160 160 160 160	36 36 36 36	30.3 30.3 30.3 30.3	5.03 5.03 5.03 5.03
BNFN 4010-5 BNF 4010-5 BIF 4010-5 BIF 4010-10	40	10	41.75	34.4	2×2.5 2×2.5 1×2.5 2×2.5	52.7 52.7 29 52.7	141.1 141.1 70.4 141.1	2650 — 1470 2650	82	124	193 103 103 163	6.8 3.58 3.58 5.18	18	175 85 85 145	102	11	17.5	11	M6	A	1230 1730 2030 2230	1000 1500 1800 2000	70 70 70 70	160 160 160 160	40 40 40 40	30.3 30.3 30.3 30.3	6.59 6.59 6.59 6.59

Model number coding

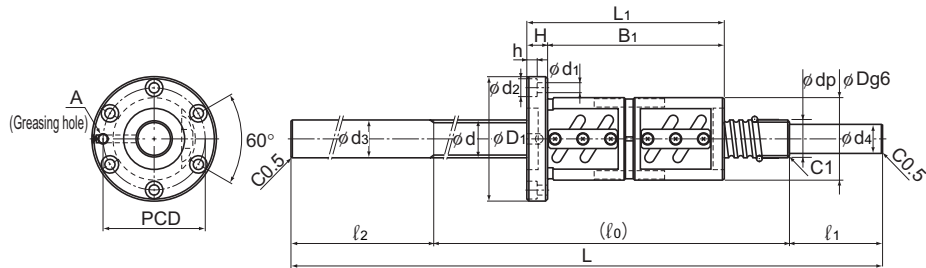
**BIF3610-5 RR G0 +1830L C5 A**

Model number    Seal symbol (\*1)    Overall screw shaft length (in mm)    Symbol for standard-stock type (symbol A or B)  
 Symbol for clearance in the axial direction (\*2)    Accuracy symbol (\*3)

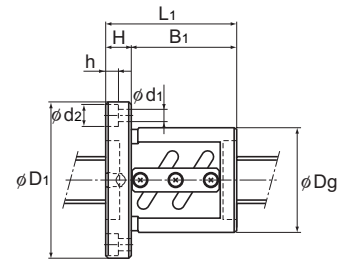
(\*1) See A-816. (\*2) See A-685. (\*3) See A-678.

Ball Screw

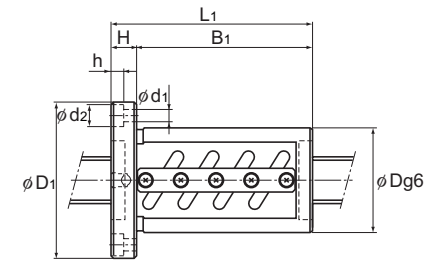
# Unfinished Shaft Ends



Model BNFN



Model BNF



Model BIF

Unit: mm

Model No.	Ball screw specifications								Nut			Dimensions								Screw shaft dimensions						Shaft mass kg/m	
	Screw shaft outer diameter d	Lead Ph	Ball center-to-center diameter dp	Thread minor diameter dc	No. of loaded circuits Rows x turns	Basic load rating		Applied preload N	Outer diameter D	Flange diameter D1	Overall length L1	Mass kg	H	B1	PCD	d1	d2	h	Greasing hole A	Standard-stock symbol	Overall length						
						Ca kN	Coa kN														L	l0	l1	l2	d3		d4
BNFN 4012-5 BNF 4012-5 BIF 4012-5 BIF 4012-10	40	12	42	34.1	2×2.5 2×2.5 1×2.5 2×2.5	61.6 61.6 33.9 61.6	158.8 158.8 79.2 158.8	3090 — 1720 3090	84	126	227 119 119 191	6.3 4.2 4.2 6.24	18	209 101 101 173	104	11	17.5	11	M6	A	1230 1730 2030 2230	1000 1500 1800 2000	70 70 70 70	160 160 160 160	40 40 40 40	30.3 30.3 30.3 30.3	6.39 6.39 6.39 6.39
BNFN 5010-5 BNF 5010-5 BIF 5010-5 BIF 5010-10	50	10	51.75	44.4	2×2.5 2×2.5 1×2.5 2×2.5	58.2 58.2 32 58.2	176.4 176.4 88.2 176.4	2890 — 1620 2890	93	135	193 103 103 163	7.2 4.4 4.4 6.35	18	175 85 85 145	113	11	17.5	11	PT 1/8	A	1300 1800 2300 2800	1000 1500 2000 2500	100 100 100 100	200 200 200 200	50 50 50 50	40.3 40.3 40.3 40.3	11.36 11.36 11.36 11.36

## Model number coding

**BNFN4012-5 RR G0 +1230L C5 A**

Model number    Seal symbol (\*1)    Overall screw shaft length (in mm)    Symbol for standard-stock type (symbol A or B)  
 Symbol for clearance in the axial direction (\*2)    Accuracy symbol (\*3)

(\*1) See A-816. (\*2) See A-685. (\*3) See A-678.