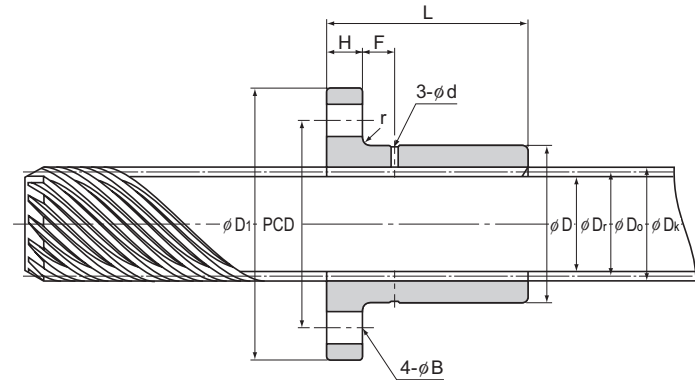
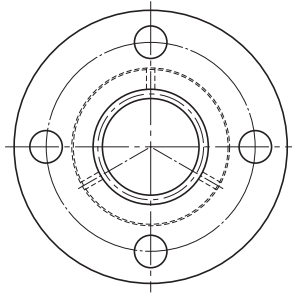


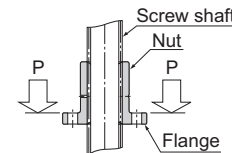
Models DCMA and DCMB



Unit: mm

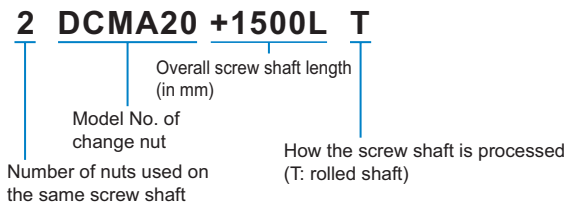
Change Nut	Outer dimensions			Change nut dimensions							Screw shaft	Multi-thread screw shaft details					Standard shaft length	Maximum shaft length	Dynamic permissible torque	Dynamic permissible thrust	Static permissible load of the flange	Mass		
	Model No. (note)	Outer diameter	Length	Flange diameter D _r	H	B	PCD	r	F	d		Model No. (note)	Outer diameter D _e	Effective diameter D ₀	Thread minor diameter D ₁	Lead R						Lead angle α°	Threaded grooves Z	T (note)
D	Tolerance h9	L	N								g						kg/m							
DCMB 8T (note)	15	0	16	28	4	3.4	21	0.8	—	—	CT 8T	9	7.6	6.2	24	(45)	6	500	1000	3.24	863	1800	5	0.36
DCMB 12T (note)	20	-0.1	25	36	5	4.5	27	1	—	—	CT 12T	13.3	11.5	9.7	36	(45)	7	500,1000	1500	12.7	1370	2800	10	0.82
DCMA 15T	22	0	15	44	6	5.4	31	1.5	4.5	1.5	CT 15T	15.8	13.7	11.6	44.4	(45)	8	500,1000	1500	16.7	2300	13800	60	1.2
DCMB 15T			30																	32.4	4610		85	
DCMA 17T	28	-0.052	15	51	7	6.6	38	1.5	4.5	1.5	CT 17T	17.8	15.7	13.6	50	(45)	9	500,1000	1500	20.6	2600	28100	95	1.5
DCMB 17T			35																	48	6080		140	
DCMA 20T	32	0	20	56	7	6.6	42	1.5	6.5	2	CT 20T	21.2	18.7	16.2	60	(45)	9	500,1000, 1500	3000	40.2	4170	34600	135	2.6
DCMB 20T			40																	79.4	8330		210	
DCMA 25T	36	-0.062	25	61	8	6.6	47	2	8.5	2	CT 25T	25.6	23.1	20.6	73.3	(45)	11	500,1000, 1500	3000	74.5	6370	38500	175	3.3
DCMB 25T			50																	148	12700		280	
DCMA 30T	44	0	28	76	10	9	58	2	9	2	CT 30T	31.9	29.4	26.9	93.3	(45)	14	500,1000, 2000	4000	130	8090	55400	290	5.3
DCMB 30T			56																	269	16200		465	
DCMA 35T	52	0	30	84	10	9	66	2.5	10	3	CT 35T	34.1	31.1	28.1	97.7	(45)	11	500,1000, 2000	4000	144	9260	84500	425	5.8
DCMB 35T			60																	287	18500		670	
DCMA 40	58	0	35	98	12	11	76	2.5	11.5	3	☆ CT 40	44	38.18	33.3	119.9	(45)	12	500,1000, 2000	—	381	20000	85200	715	9
DCMB 40			70								763	40000	1065											
DCMA 45	64	-0.074	37	104	12	11	80	2.5	12.5	3	☆ CT 45	47	41.37	36.4	129.9	(45)	13	1000,2000, 3000	—	474	22900	115000	820	10.6
DCMB 45			75								960	46600	1270											
DCMA 50	68	0	40	109	12	11	85	2.5	14	3	☆ CT 50	52	47.73	42.9	149.9	(45)	15	1000,2000, 3000	—	681	28500	108000	925	14
DCMB 50			80								1360	57100	1375											

Note) Symbol T indicates that a rolled shaft is used in combination with the change nut.
 The dynamic permissible torque (T) and the dynamic permissible thrust (F) indicate the values at which the contact surface pressure on the screw teeth is 9.8 N/mm². Miniature Change Nut models DCMB8T and DCMB12T use oil-impregnated plastics. (outer diameter tolerance: special).
 The screw shafts marked with "☆" are build-to-order.
 The static permissible load (P) of the flange indicates the strength of the flange against the load as shown in the figure on the right.



Model number coding

Combination of change nut and screw shaft



Model number coding

Multi-thread screw shaft

