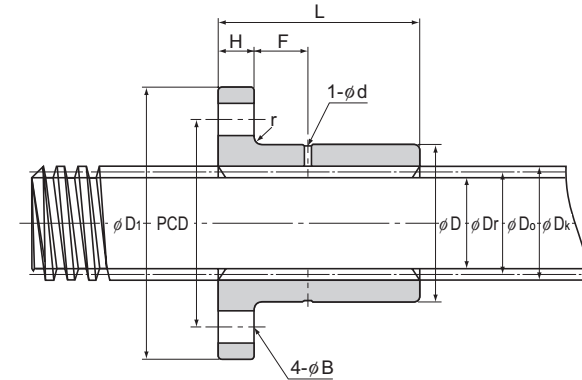
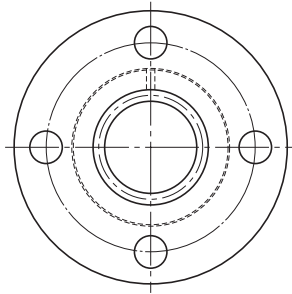


# Model DCM



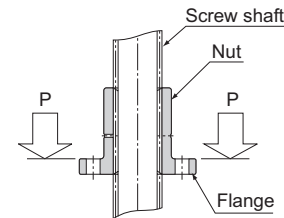
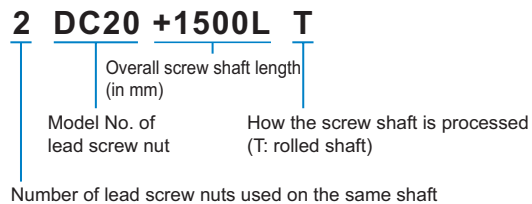
Unit: mm

Lead Screw Nut Model No.	Outer dimensions			Lead screw nut dimensions							Screw shaft Model No. <small>(note)</small>	Screw shaft details					Standard shaft length	Maximum shaft length	Dynamic permissible thrust $F^{(note)}$ N	Static permissible load of the flange $P^{(note)}$ N	Mass	
	Outer diameter		Length L	Flange diameter $D_1$	H	B	PCD	r	F	d		Outer diameter $D_k$	Effective diameter $D_o$	Thread minor diameter $D_r$	Lead R	Lead angle $\alpha$					Screw nut g	Screw shaft kg/m
	D	Tolerance h9																				
DCM 12	22	0	30	44	6	5.4	31	1.5	7	1.5	CS 12	12	11	9.5	2	3° 19'	1000	1500	3920	20200	100	0.8
DCM 14	22	-0.052	30	44	6	5.4	31	1.5	7	1.5	CS 14	14	12.5	10.5	3	4° 22'	1000	1500	4900	16900	85	1
DCM 16	28	0	35	51	7	6.6	38	1.5	8	1.5	CS 16	16	14.5	12.5	3	3° 46'	1000	1500	6670	31500	160	1.3
DCM 18	32	-0.062	40	56	7	6.6	42	1.5	10.5	2	CS 18	18	16	13.5	4	4° 33'	1000	2000	8730	42000	230	1.6
DCM 20	32	0	40	56	7	6.6	42	1.5	10.5	2	CS 20	20	18	15.5	4	4° 03'	1500	2000	9800	37200	210	2
DCM 22	36	-0.074	50	61	8	6.6	47	2	14	2.5	CS 22	22	19.5	16.5	5	4° 40'	1500	2500	12400	48600	320	2.3
DCM 25	36	0	50	61	8	6.6	47	2	14	2.5	CS 25	25	22.5	19.5	5	4° 03'	1500	3000	14200	39800	290	3.1
DCM 28	44	-0.052	56	76	10	9	58	2	15	2.5	CS 28	28	25.5	22.5	5	3° 34'	2000	3000	17900	69200	550	4
DCM 32	44	0	56	76	10	9	58	2	15	2.5	CS 32	32	29	25.5	6	3° 46'	2000	4000	21100	54200	490	5.2
DCM 36	52	-0.074	60	84	10	9	66	2.5	17	3	CS 36	36	33	29.5	6	3° 19'	2000	4000	25800	84500	670	6.7
DCM 40	58	0	70	98	12	11	76	2.5	19	3	CS 40	40	37	33.5	6	2° 57'	2000	4000	33800	106000	980	8.4
DCM 45	64	-0.052	75	104	12	11	80	2.5	21.5	4	CS 45	45	41	36.5	8	3° 33'	3000	5000	42100	125000	1310	10.4
DCM 50	68	0	80	109	12	11	85	2.5	24	4	CS 50	50	46	41.5	8	3° 10'	3000	5000	50100	128000	1430	13

Note) Cut shafts (K) and ground shafts (G) are build-to-order.  
 The dynamic permissible thrust (F) indicates the torque at which the contact surface pressure on the screw tooth surface is 9.8 N/mm<sup>2</sup>.  
 The static permissible load (P) of the flange indicates the strength of the flange against the load as shown in the figure on the right.

### Model number coding

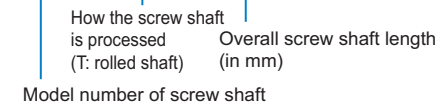
Combination of lead screw nut and screw shaft



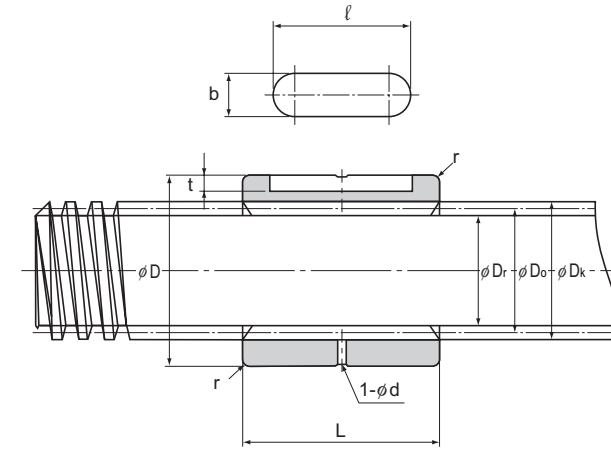
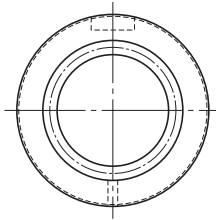
### Model number coding

Screw shaft

**CS20 T +1500L**



# Model DC



Unit: mm

Lead Screw Nut Model No.	Outer dimensions		Lead screw nut dimensions						Screw shaft Model No. <sup>(note)</sup>	Screw shaft details					Standard shaft length	Maximum shaft length	Dynamic permissible thrust F <sup>(note)</sup> N	Mass		
	Outer diameter		L 0 -0.3	Keyway dimensions				Lead angle α		Screw nut g	Screw shaft kg/m									
	D	Tolerance h9		b	Tolerance N9	t	l					d	r							
DC 12	22	0	22	4	0	2	16	1.5	1	CS 12	12	11	9.5	2	3°19'	1000	1500	2840	40	0.8
DC 14	22	-0.052	22	4	-0.030	2	16	1.5	1	CS 14	14	12.5	10.5	3	4°22'	1000	1500	3630	45	1
DC 16	28		26	5		2.5	18	1.5	1	CS 16	16	14.5	12.5	3	3°46'	1000	1500	4900	75	1.3
DC 18	32		31	7		2.5	22	2	1	CS 18	18	16	13.5	4	4°33'	1000	2000	6860	120	1.6
DC 20	32		31	7		2.5	22	2	1	CS 20	20	18	15.5	4	4°03'	1500	2000	7650	110	2
DC 22	36	0	40	7	0	2.5	26	2.5	1	CS 22	22	19.5	16.5	5	4°40'	1500	2500	9900	180	2.3
DC 25	36	-0.062	40	7	-0.036	2.5	26	2.5	1	CS 25	25	22.5	19.5	5	4°03'	1500	3000	11400	155	3.1
DC 28	44		45	10		4	32	2.5	1.5	CS 28	28	25.5	22.5	5	3°34'	2000	3000	14400	280	4
DC 32	44		45	10		4	32	2.5	1.5	CS 32	32	29	25.5	6	3°46'	2000	4000	17100	230	5.2
DC 36	52		49	12		4.5	40	3	1.5	CS 36	36	33	29.5	6	3°19'	2000	4000	21200	380	6.7
DC 40	58	0	57	15	0	5	42	3	1.5	CS 40	40	37	33.5	6	2°57'	2000	4000	27500	520	8.4
DC 45	64	-0.074	62	15	-0.043	5	48	4	1.5	CS 45	45	41	36.5	8	3°33'	3000	5000	34900	730	10.4
DC 50	68		67	15		5	52	4	1.5	CS 50	50	46	41.5	8	3°10'	3000	5000	42100	810	13

Note) Cut shafts (K) and ground shafts (G) are build-to-order.  
The dynamic permissible thrust (F) indicates the torque at which the contact surface pressure on the screw tooth surface is 9.8 N/mm<sup>2</sup>.

### Model number coding

Combination of lead screw nut and screw shaft

**2 DC20 +1500L T**

2: Number of lead screw nuts used on the same shaft  
 DC20: Model No. of lead screw nut  
 +1500L: Overall screw shaft length (in mm)  
 T: How the screw shaft is processed (T: rolled shaft)

### Model number coding

Screw shaft

**CS20 T +1500L**

CS20: Model number of screw shaft  
 T: How the screw shaft is processed (T: rolled shaft)  
 +1500L: Overall screw shaft length (in mm)