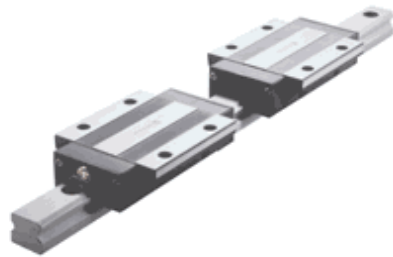
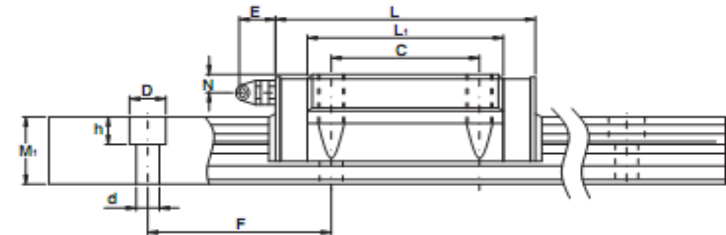
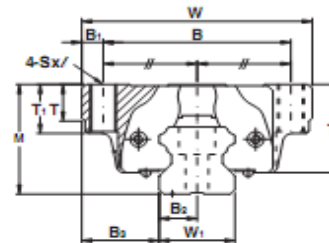




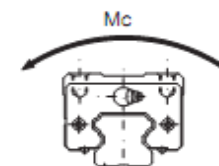
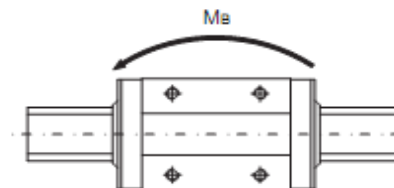
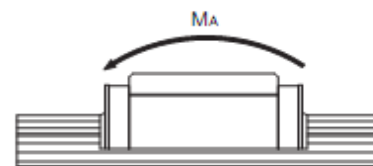
FLANGE MODEL FL-CA,HA



FL SERIE'S

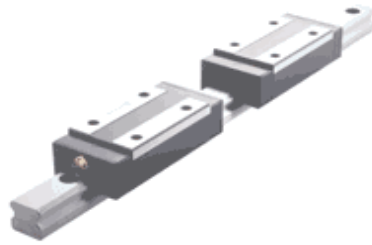


Dimensões / mm																				
Referência	Bloco												Trilho							
	W	L	M	B	B1	L1	C	T	T1	T2	SxI	N	E	Lub.	W1	M1	F	B2	B3	dxDxH
FL15CA	47	66,5	24	38	4,5	38,5	30	7	11	19,5	M5x11	4,5	5,5	M4x0,7P	15	15	60	7,5	16,0	4,5x7,5x5,5
FL20CA	63	80,5	30	53	5	50,5	40	10	10	24,5	M6x10	5	12	M6x1,0P	20	18	60	10	21,5	6x9,5x8,5
FL20HA		66,5																		
FL25CA	70	89,5	36	57	6,5	59,5	45	12	16	29	M8x16	6	12	M6x1,0P	23	22	60	11,5	23,5	7x11x9
FL25HA		78,5																		
FL30CA	90	103,5	42	72	9	70,5	52	12	18	34	M10x18	7	12	M6x1,0P	28	26	80	14	31	9x14x12
FL30HA		125,5																		
FL35CA	100	115,5	48	82	9	80,5	62	13	21	39	M10x21	8	12	M6x1,0P	34	29	80	17	33	9x14x12
FL35HA		140,5																		
FL45CA	120	137,5	60	100	10	98,5	80	14	25	48,5	M12x25	10	16	1/8 PT	45	38	105	22,5	37,5	14x20x17
FL45HA		169,5																		

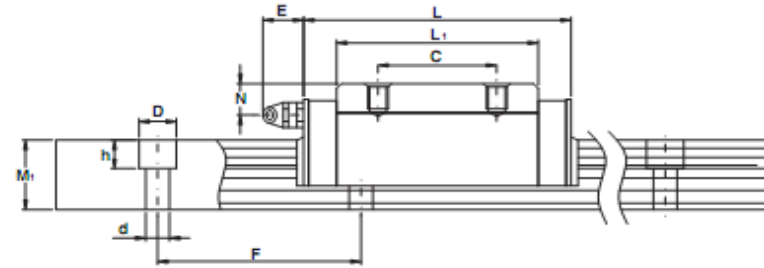
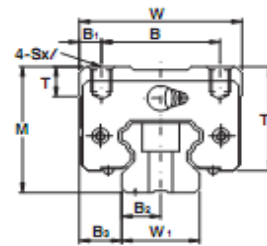




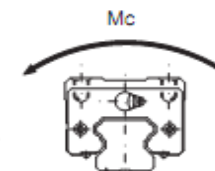
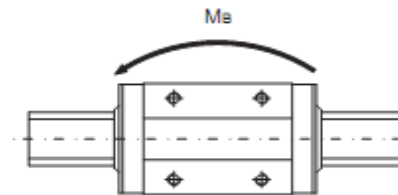
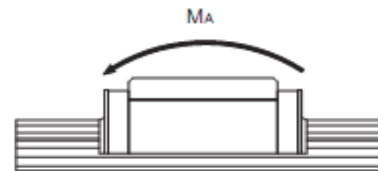
SQUARE MODEL GL-CA,HA



GL SERIE'S

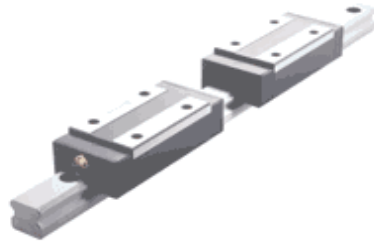


Referência	Dimensões / mm																		
	Bloco											Trilho							
	W	L	M	B	B1	L1	C	T	T2	SxI	N	E	Lub.	W1	M1	F	B2	B3	dxDxH
GL15CA	34	66,5	28	26	4	38,5	26	6	23,5	M4x5	8,5	5,5	M4x0,7P	15	15	60	7,5	9,5	4,5x7,5x5,5
GL20CA	44	80,5	30	32	6	50,5	36	8	24,5	M5x6	5	12	M6x1,0P	20	18	60	10	12,0	6x9,5x8,5
GL20HA	44	96,5	30	32	6	66,5	50	8	24,5	M5x6	5	12	M6x1,0P	20	18	60	10	12,0	6x9,5x8,5
GL25CA	48	89,5	40	35	6,5	59,5	35	12	33	M6x8	10	12	M6x1,0P	23	22	60	11,5	12,5	7x11x9
GL25HA	48	108,5	40	35	6,5	78,5	50	12	33	M6x8	10	12	M6x1,0P	23	22	60	11,5	12,5	7x11x9
GL30CA	60	103,5	45	40	10	70,5	40	12	37	M8x10	10	12	M6x1,0P	28	26	80	14	16	9x14x12
GL30HA	60	125,5	45	40	10	92,5	60	12	37	M8x10	10	12	M6x1,0P	28	26	80	14	16	9x14x12
GL35CA	70	115,5	55	50	10	80,5	50	12	46	M8x12	15	12	M6x1,0P	34	29	80	17	18	9x14x12
GL35HA	70	140,5	55	50	10	105,5	72	12	46	M8x12	15	12	M6x1,0P	34	29	80	17	18	9x14x12
GL45CA	86	137,5	70	60	13	98,5	60	15	58,5	M10x17	20	16	1/8 PT	45	38	105	22,5	20,5	14x20x17
GL45HA	86	169,5	70	60	13	130,5	80	15	58,5	M10x17	20	16	1/8 PT	45	38	105	22,5	20,5	14x20x17

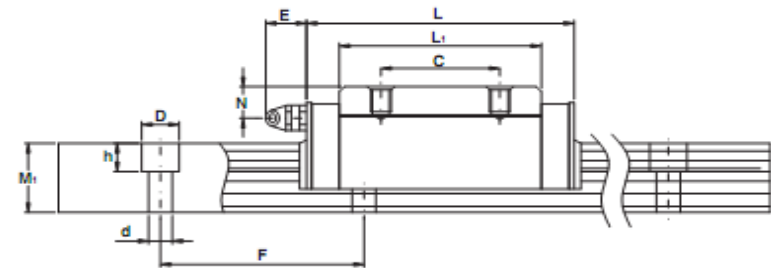
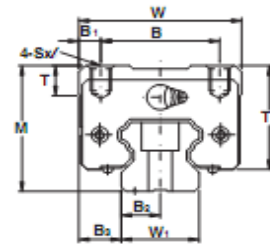




SQUARE MODEL GR-TA,SA



GR SERIE'S



Referência	Dimensões / mm													Trilho					
	Bloco																		
	W	L	M	B	B1	L1	C	T	T2	SxI	N	E	Lub.	W1	M1	F	B2	B3	dxDxH
GR15TA	34	67,5	24	26	4	39,5	26	6	19,5	M4x5	4,0	5,5	M4x0,7P	15	15	60	7,5	9,5	4,5x7,5x5,5
GR15SA		50,5				22,5	-												
GR20TA	42	76,5	28	32	5	46,5	32	7,5	22,5	M5x6	4	12	M6x1,0P	20	18	60	10	11	6x9,5x8,5
GR20SA		57,5				27,5	-												
GR25TA	48	89,0	33	35	6,5	59,0	35	8	26	M6x8	4,5	12	M6x1,0P	23	22	60	11,5	12,5	7x11x9
GR25SA		65,0				35,0	-												
GR30TA	60	102,5	42	40	10	69,0	40	9	34	M8x10	7	12	M6x1,0P	28	26	80	14	16	9x14x12
GR30SA		73,5				40,5	-												
GR35TA	70	114,0	48	50	10	79,0	50	13	39	M8x12	8	12	M6x1,0P	34	29	80	17	18	9x14x12
GR35SA		80,5				45,5	-												

